

JOE POOL TWO DEPARTURE

FORT WORTH NAS JRB (CARSWELL FIELD) (NFW)
AL-160 (FAA)
FORT WORTH, TEXAS

ATIS★
351.675
CLNC DEL
126.4 254.325
GND CON
121.675 279.575
NAVY FORT WORTH TOWER★
120.95 269.325
REGIONAL DEP CON
125.8 257.95

TAKEOFF MINIMUMS
Refer to appropriate military service directives.

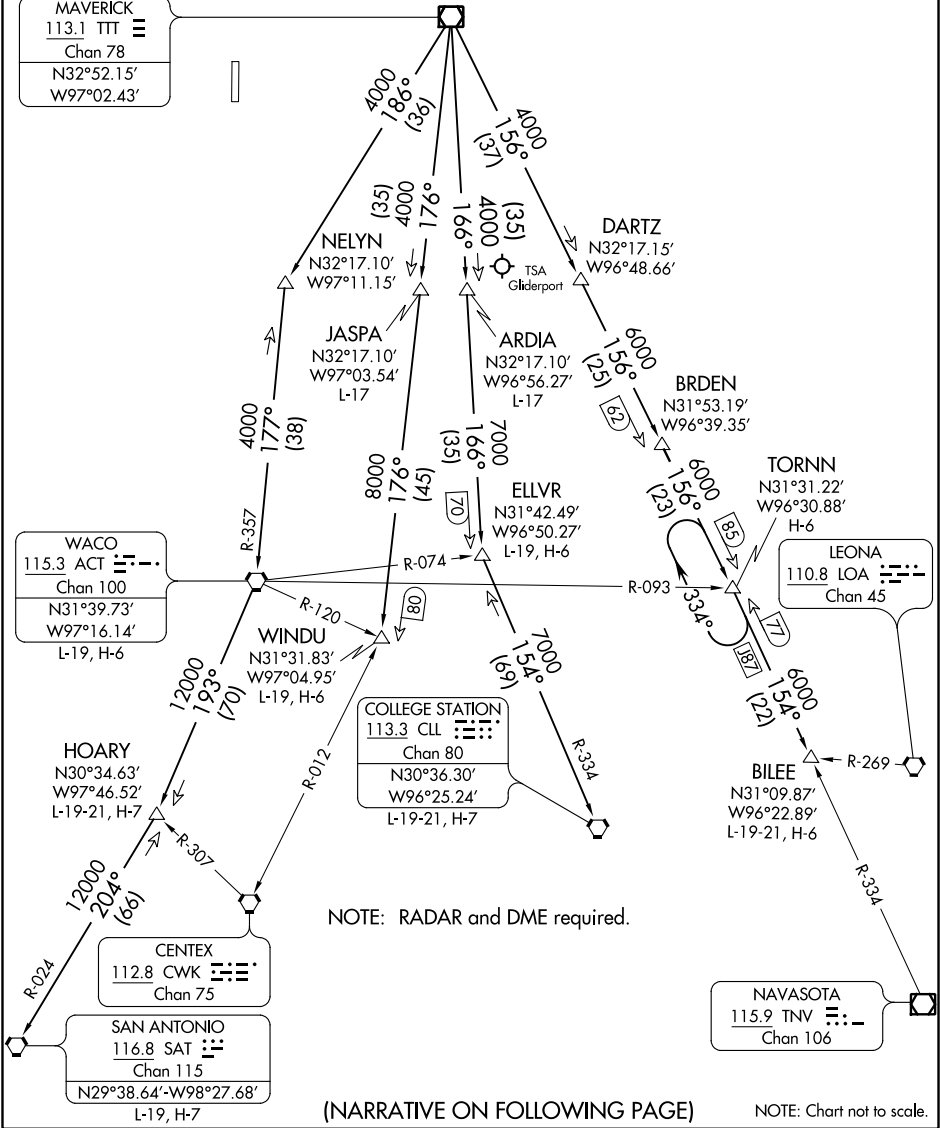
MAVERICK
113.1 TTT
Chan 78
N32°52.15'
W97°02.43'

WACO
115.3 ACT
Chan 100
N31°39.73'
W97°16.14'
L-19, H-6

COLLEGE STATION
113.3 CLL
Chan 80
N30°36.30'
W96°25.24'
L-19-21, H-7

LEONA
110.8 LOA
Chan 45

NAVASOTA
115.9 TNV
Chan 106



NOTE: RADAR and DME required.

(NARRATIVE ON FOLLOWING PAGE)

NOTE: Chart not to scale.

JOE POOL TWO DEPARTURE

(JPOOL2.TTT) 31DEC20

FORT WORTH, TEXAS
FORT WORTH NAS JRB (CARSWELL FIELD) (NFW)

SC-2, 31 DEC 2020 to 28 JAN 2021