

RNAV (GPS) RWY 18

FORT WORTH NAS JRB (CARSWELL FLD) (KNFW)

WAAS CH 71215 W18A	APCH CRS 177°	Rwy Idg 11,999 TDZE 636 Arpt Elev 650
--	-------------------------	--

AL-160 [USN]

FORT WORTH NAS JRB (CARSWELL FLD) (KNFW)

* Circling not authorized E of Rwy 18-36.
** Baro VNAV NA when local altimeter not received.

MISSED APPROACH: Climb to 1700, then climbing right turn to 3000 direct MOLKE and hold.

ATIS★ 351.675	REGIONAL APP CON 125.8 257.95	NAVY FORT WORTH TOWER★ 120.950 269.325	GND CON 121.675 279.575	CLNC DEL 126.4 254.325	ASR/ PAR
------------------	----------------------------------	---	----------------------------	---------------------------	-------------

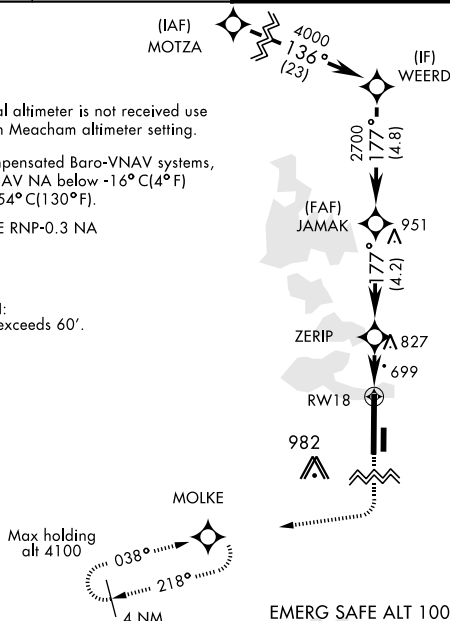
When local altimeter is not received use Fort Worth Meacham altimeter setting.

For uncompensated Baro-VNAV systems,
LNAV/VNAV NA below -16°C(4°F)
or above 54°C(130°F).

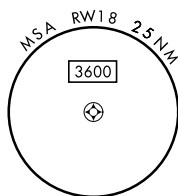
DME/DME RNP-0.3 NA

CAUTION:
LPV TCH exceeds 60'.

CAUTION: Wheel crossing height for height group 1 (53') is higher than the maximum 50'. Wheel crossing height group 1 includes general aviation, small commuters, corporate turbojets, T-38, C-12, C-20, C-21 T-1, fighter jets, UC-35, T-3, T-6 aircraft.



EMERG SAFE ALT 100 NM 4100



1700 ↑	3000 ↗	MOLKE ✦				
CATEGORY	A		B		C	D
LPV DA	836- $\frac{3}{4}$		200		(200- $\frac{3}{4}$)	
LNAV/VNAV DA **	1043-1 $\frac{1}{8}$		407		(400-1 $\frac{1}{8}$)	
LNAV MDA	1080-1	444 (500-1)	1080-1 $\frac{3}{8}$ 444 (500-1 $\frac{3}{8}$)			
C CIRCLING *	1240-1 590 (600-1)	1280-1 630 (700-1)	1320-1 $\frac{3}{4}$ 670 (700-1 $\frac{3}{4}$)	1320-2 670 (700-2)		
FORT WORTH MEACHAM ALTIMETER						
LPV DA	856- $\frac{3}{4}$		220		(300- $\frac{3}{4}$)	
LNAV MDA	1100-1	464 (500-1)	1100-1 $\frac{3}{8}$ 464 (500-1 $\frac{3}{8}$)			
C CIRCLING *	1260-1 610 (700-1)	1300-1 650 (700-1)	1340-2 690 (700-2)	1340-2 $\frac{1}{4}$ 690 (700-2 $\frac{1}{4}$)		

ELEV 650 **TDZE** 636

177° to RW18

8 L

(P)

H

11,999 x 200

TWR 759

A₁

36

35' ± 177'

3998 x 50

ASSAULT STRIP

REIL Rwy 18 (●)

HIRL Rwy 18-36 (●)

FORT WORTH, TEXAS

32°46'N-97°26'W

FORT WORTH NAS JRB (CARSWELL FLD) (KNFW)

Amdt 1 18JUN20

RNAV (GPS) RWY 18

SC-2, 31 DEC 2020 to 28 JAN 2021

SC-2, 31 DEC 2020 to 28 JAN 2021