
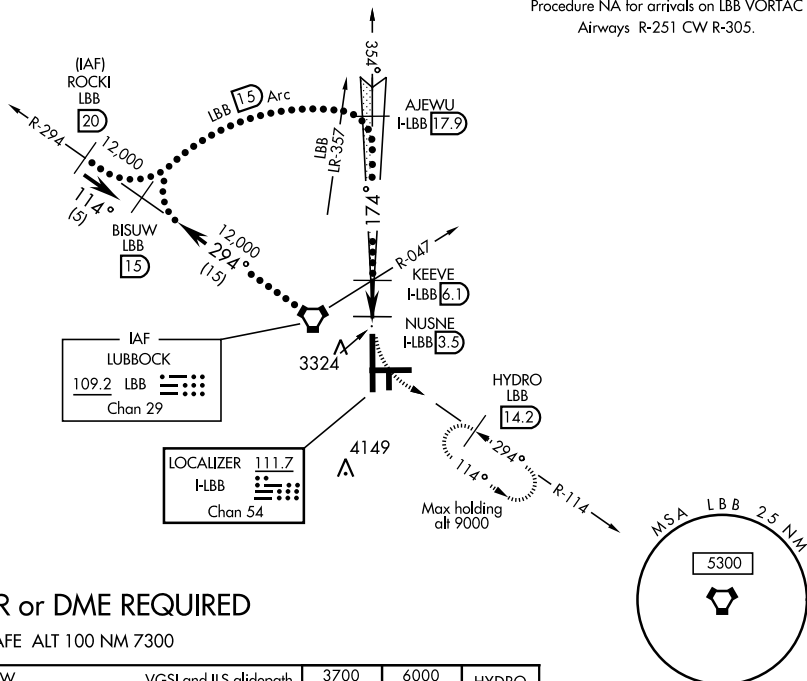


LUBBOCK, TEXAS

## HI-ILS or LOC RWY 17R

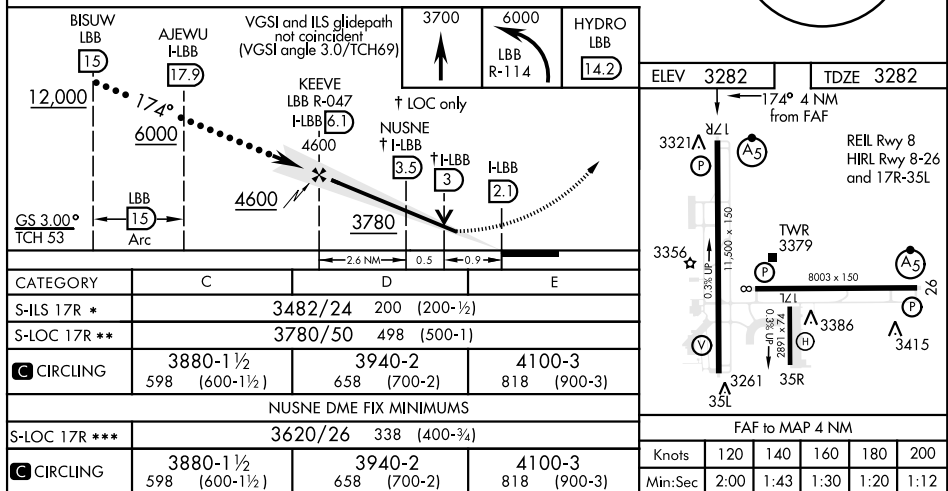
LOC LBB <b>111.7</b> Chan <b>54</b>	APCH CRS <b>174°</b>	Rwy Idg <b>11,500</b> TDZE <b>3282</b> Arpt Elev <b>3282</b>	JAL-241 [USAF]	LUBBOCK PRESTON SMITH INTL (KLBB)	
<b>▽</b> * When ALS inop, increase CAT E RVR to 40. <b>**</b> When ALS inop, increase CAT CDE vis to 1 1/2 mile. <b>▲</b> *** When ALS inop, increase CAT CDE RVR to 50.			<b>MALSR</b> 	<b>MISSED APPROACH:</b> Climb to 3700, then climbing left turn to 6000 via LBB VORTAC R-114 to HYDRO (LBB 14.2 DME) and hold, continue climb to hold to 6000.	
<b>ATIS</b> <b>125.3 270.275</b>		<b>LUBBOCK APP CON</b> <b>119.2 351.8</b>	<b>LUBBOCK TOWER</b> <b>120.5 239.3</b>	<b>GND CON</b> <b>121.9 348.6</b>	<b>CLNC DEL</b> <b>125.8 281.55</b>

Procedure NA for arrivals on LBB VORTAC  
Airways R-251 CW R-305.



**RADAR or DME REQUIRED**

EMERG SAFE ALT 100 NM 7300



LUBBOCK, TEXAS

33°40'N-101°49'W

LUBBOCK PRESTON SMITH INTL (KLBB)

## HI-ILS or LOC RWY 17R

Amdt 2 02FEB17

SC-2, 31 DEC 2020 to 28 JAN 2021