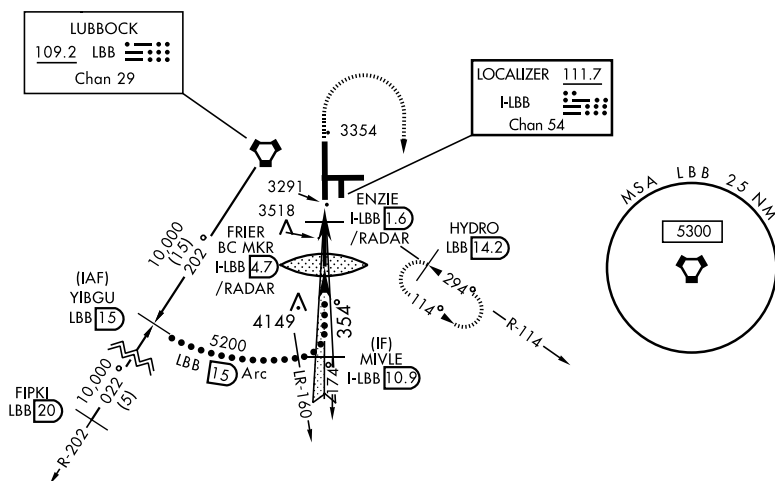


LUBBOCK, TEXAS

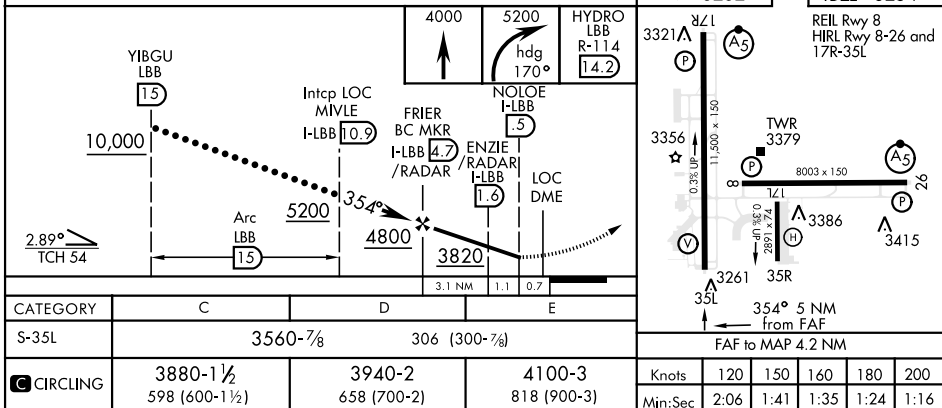
HI-LOC/DME BC RWY 35L

LOC I-LBB 111.7 Chan 54		APCH CRS 354°		Rwy ldg 11,500 TDZE 3254 Arpt Elev 3282		JAL-241 [USAF]		LUBBOCK PRESTON SMITH INTL (KLBB)	
<div>▼</div> <div>▲</div> Use I-LBB DME when on Localizer course.						MISSED APPROACH: Climb to 4000, then climbing right turn to 5200 on Hdg 170 ° and on LBB VORTAC R-114 to HYDRO INT/LBB 14.2 DME and hold.			
ATIS 125.3 270.275		LUBBOCK APP CON 119.2 351.8		LUBBOCK TOWER 120.5 239.3		GND CON 121.9 348.6		CLNC DEL 125.8 281.55	



BACKCOURSE

EMERG SAFE ALT 100 NM 7300



LUBBOCK, TEXAS
Orig C 21MAY20

33°40'N-101°49'W

LUBBOCK PRESTON SMITH INTL (KLBB)

HI-LOC/DME BC RWY 35L