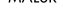


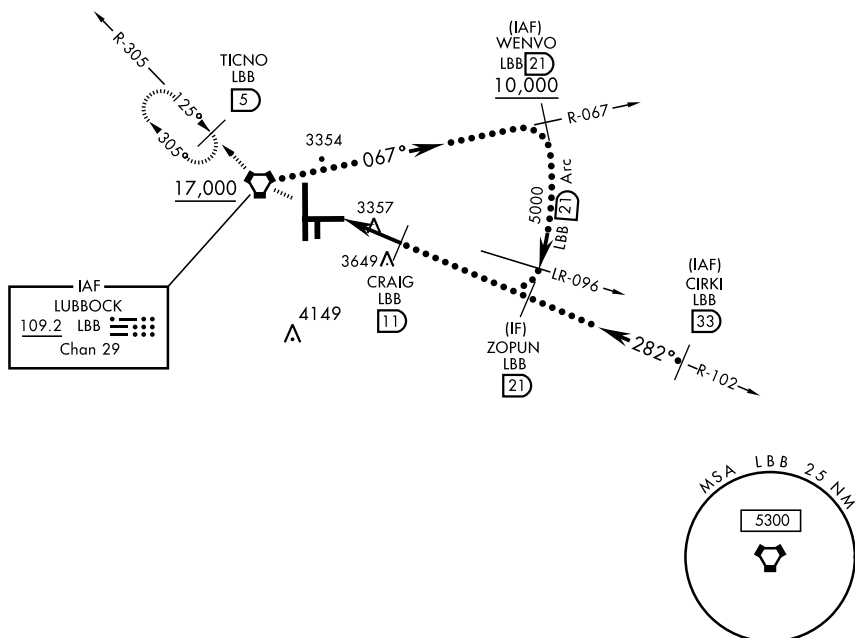
HI-VOR/DME or TACAN RWY 26

VORTAC LBB 109.2 Chan 29	APCH CRS 282°	Rwy Idg THRE Arpt Elev 8003 3253 3282
--	-------------------------	---

JAL-241 [USAF]

LUBBOCK PRESTON SMITH INTL (KLBB)

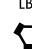

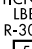
* Inoperative Table does not apply.		MALSR 	MISSED APPROACH: Climb and maintain 5100 direct LBB VORTAC and via LBB R-305 to TICNO (LBB 5 DME) and hold.	
ATIS 125.3 270.275	LUBBOCK APP CON 119.2 351.8	LUBBOCK TOWER 120.5 239.3	GND CON 121.9 348.6	CLNC DEL 125.8 281.55

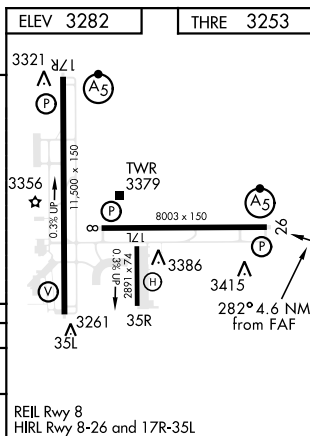


RADAR REQUIRED

(For entry at CIRKI)

EMERG SAFE ALT 100 NM 7300

5100	LBB	TICNO LBB R-305			
					
VORTAC	WODOK	CRAIG	ZOPUN	CIRKI	
	6.4	7.6	11	15,000	
			4700	5000	
			282°	282°	
			4.6 NM		
CATEGORY	C	D	E		
S-26 *	3680-1¼	427	(400-1¼)		
CIRCLING	3740-1½ 458 (500-1½)	3840-2 558 (600-2)	3980-2½ 698 (700-2½)		



LUBBOCK, TEXAS

33°40'N-101°49'W

LUBBOCK PRESTON SMITH INTL (KLBB)

Amdt 1 13DEC12

HI-VOR/DME or TACAN RWY 26