

LOC/DME I-LBB	APP CRS	Rwy Idg
111.7	174°	11500
Chan 54		TDZE 3282
		Apt Elev 3282

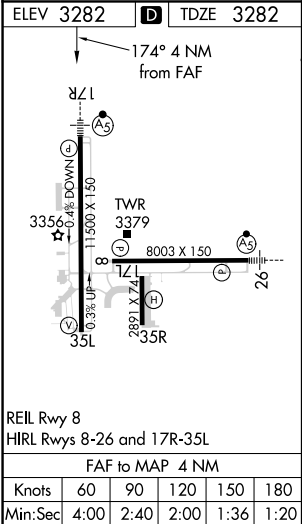
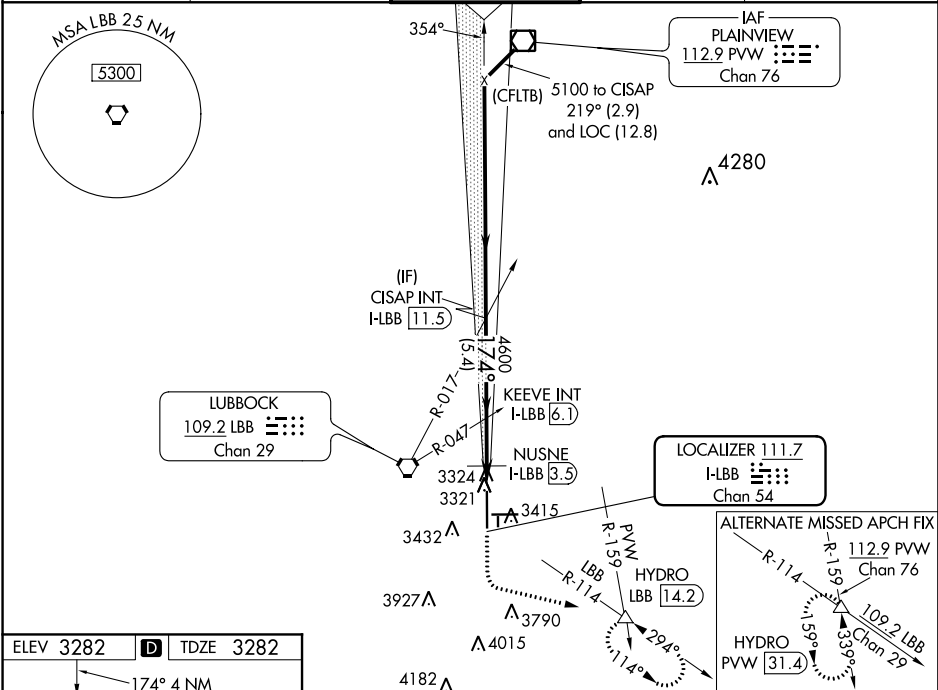
ILS or LOC Rwy 17R
LUBBOCK PRESTON SMITH INTL (LBB)

⚠ For inop MALS, increase S-ILS 17R Cat E visibility to RVR 4000, S-LOC 17R Cat C/D/E visibility to 1 1/2 mile, and NUSNE DME Fix Minimums, increase S-LOC 17R Cat C/D/E visibility to RVR 5000.
#RVR 1800 authorized with the use of FD or AP or HUD to DA.

MALS

MISSED APPROACH: Climb to 3700 then climbing left turn to 6000 via LBB VORTAC R-114 to HYDRO INT/LBB 14.2 DME and hold, continue climb-in-hold to 6000.

ATIS 125.3 270.275	LUBBOCK APP CON 119.2 351.8	LUBBOCK TOWER 120.5 239.3	GND CON 121.9 348.6	CLNC DEL 125.8 281.55
------------------------------	---------------------------------------	-------------------------------------	-------------------------------	---------------------------------



3700 ↑		6000 ↖ LBB R-114		HYDRO △		VGS1 and ILS glidepath not coincident (VGS1 Angle 3.00°/TCH 69°).					
*LOC only.		I-LBB 2.1		*I-LBB 3		NUSNE I-LBB 3.5		KEEVE INT I-LBB 6.1		CISAP INT I-LBB 11.5	
		0.8 NM		0.6 NM		2.6 NM		5.4 NM			
		3780		4600		5100		174°		GS 3.00° TCH 53	
CATEGORY		A		B		C		D		E	
S-ILS 17R		#3482/24 200 (200-½)									
S-LOC 17R		3780/24 498 (500-½)				3780/50 498 (500-1)					
CIRCLING		3780-1 498 (500-1)				3880-1½ 598 (600-1½)		3940-2 658 (700-2)		4100-3 818 (900-3)	
NUSNE FIX MINIMUMS (DME REQUIRED)											
S-LOC 17R		3620/24 338 (400-½)				3620/26 338 (400-½)					
CIRCLING		3720-1 438 (500-1)		3740-1 458 (500-1)		3880-1½ 598 (600-1½)		3940-2 658 (700-2)		4100-3 818 (900-3)	

SC-2, 31 DEC 2020 to 28 JAN 2021

SC-2, 31 DEC 2020 to 28 JAN 2021