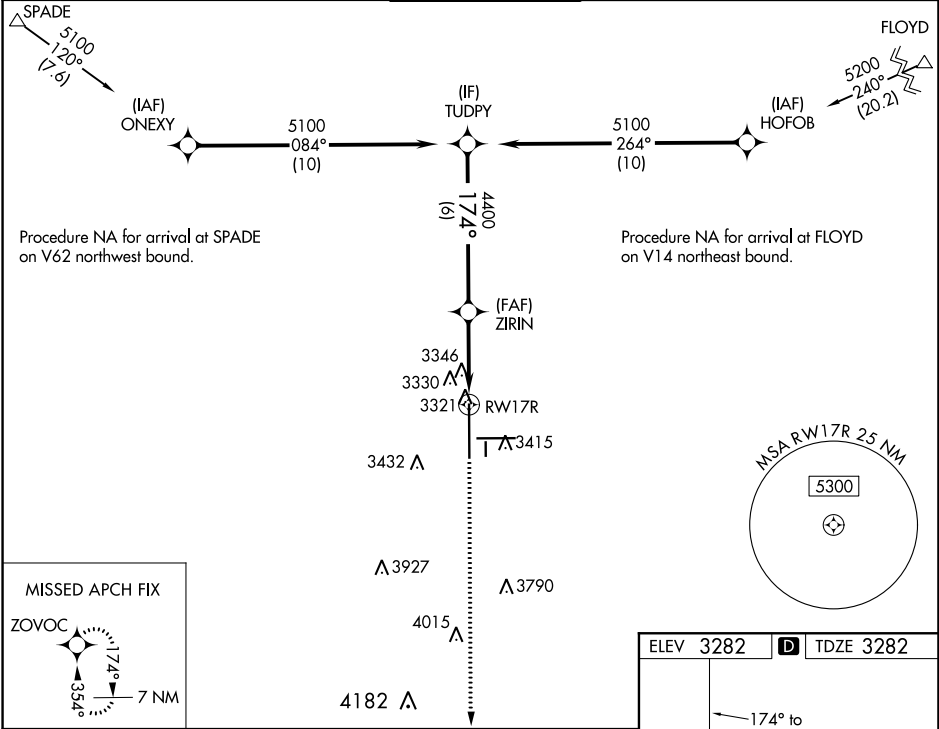


WAAS CH 40028 W17A	APP CRS 174°	Rwy Idg TDZE 3282 Apt Elev 3282
--	------------------------	---

RNAV (GPS) Y RWY 17R
LUBBOCK PRESTON SMITH INTL (LBB)

RNP APCH.	For uncompensated Baro-VNAV systems, LNAV/VNAV NA below -12°C or above 51°C. For inop ALS increase LPV Cat E visibility to RVR 4000, LNAV/VNAV Cat E visibility to RVR 5000 and LNAV Cat C/D/E visibility to RVR 4500. **RVR 1800 authorized with use of FD or AP or HUD to DA.	MALSR 	MISSED APPROACH: Climb to 5400 direct ZOVOC and hold.
-----------	---	-----------	--

ATIS 125.3 270.275	LUBBOCK APP CON 119.2 351.8	LUBBOCK TOWER 120.5 239.3	GND CON 121.9 348.6	CLNC DEL 125.8 281.55
------------------------------	---------------------------------------	-------------------------------------	-------------------------------	---------------------------------



TUDPY VGSi and RNAV glidepath not coincident (VGSi Angle 3.00/TCH 69).				
CATEGORY	A	B	C	D
LPV DA **	3482/24 200 (200-½)			
LNAV/VNAV DA	3591/24 309 (400-½)			
LNAV MDA	3600/24 318 (400-½)			
CIRCLING	3720-1 438 (500-1)	3740-1 458 (500-1)	3880-1½ 598 (600-1½)	3940-2 658 (700-2)

