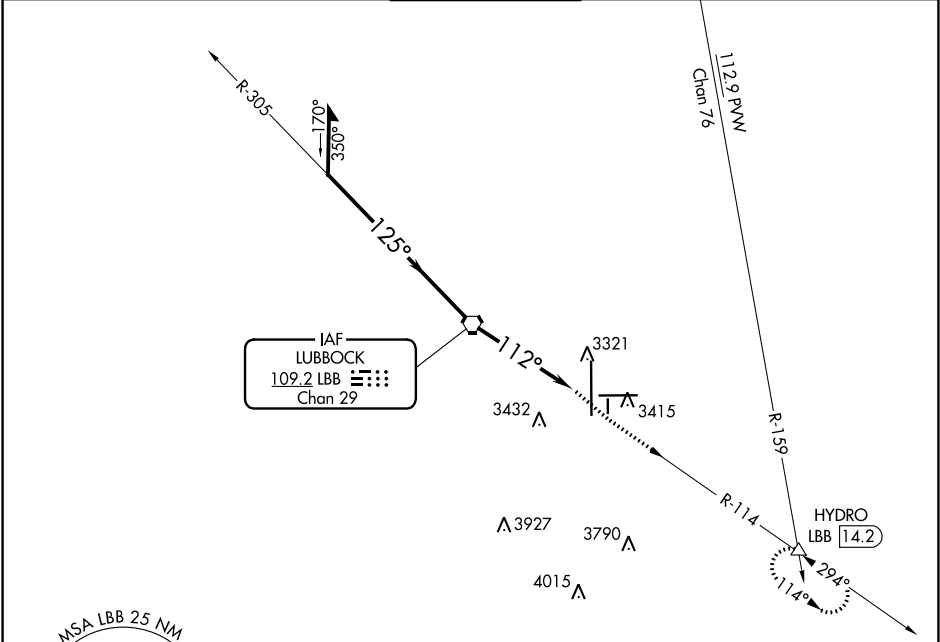


VORTAC LBB 109.2 Chan 29	APP CRS 112°	Rwy Idg TDZE Apt Elev N/A N/A 3282
--	------------------------	--

VOR-A

LUBBOCK PRESTON SMITH INTL (LBB)

ATIS 125.3 270.275		LUBBOCK APP CON 119.2 351.8	LUBBOCK TOWER 120.5 239.3	GND CON 121.9 348.6	CLNC DEL 125.8 281.55
------------------------------	--	---------------------------------------	-------------------------------------	-------------------------------	---------------------------------



CATEGORY					ELEV 3282 D					
A					B					
C					D					
Knots					Min:Sec					
60					120					
90					150					
120					180					
150					210					
180					240					

Diagram illustrating the flight path and navigation aids for the LBB VORTAC (109.2 LBB, Chan 29). The path starts from the northwest, passing through the IAF LUBBOCK, and continues southeast towards the HYDRO LBB (14.2). Key altitudes and distances are marked: 3500, 3432, 3321, 3415, 3927, 3790, 4015, 4182, and 5300. The path is defined by bearings of 170°, 125°, 112°, and 114°. A missed approach procedure is indicated: Climb to 5200 via LBB R-114 to HYDRO INT and hold. A circular MSA LBB 25 NM is shown with an elevation of 5300.