

LUBBOCK, TEXAS

AL-241 (FAA)

20254

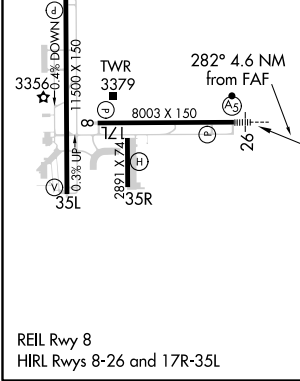
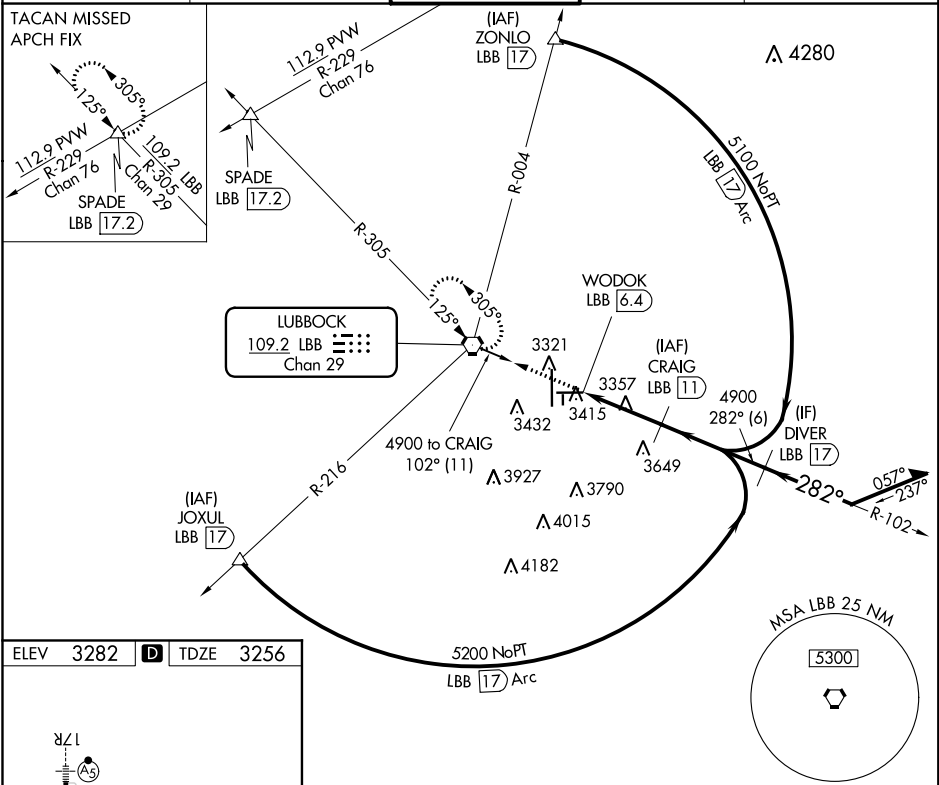
VORTAC LBB	APP CRS	Rwy Idg	8003
109.2	282°	TDZE	3256
Chan 29		Apt Elev	3282

VOR/DME or TACAN RWY 26

LUBBOCK PRESTON SMITH INTL (LBB)

 Inop table does not apply.	 MISSED APPROACH: Climb to 5000 direct LBB VORTAC and hold (TACAN aircraft continue climb to 5100 on LBB R-305 to SPADE INT/17.2 DME and hold NW, left turn 125° inbound).
--------------------------------	---

ATIS 125.3 270.275	LUBBOCK APP CON 119.2 351.8	LUBBOCK TOWER 120.5 239.3	GND CON 121.9 348.6	CLNC DEL 125.8 281.55
------------------------------	---------------------------------------	-------------------------------------	-------------------------------	---------------------------------



	5000	LBB		CRAIG LBB 11	Remain within 15 NM
				102°	4900
				282°	4900
				3.28° TCH 50	
				1.2 NM	3.4 NM
CATEGORY	A	B	C	D	E
S-26	3680/55	424 (400-1)	3680-1¼	424 (400-1¼)	
CIRCLING	3720-1 438 (500-1)	3740-1 458 (500-1)	3880-1½ 598 (600-1½)	3940-2 658 (700-2)	4100-3 818 (900-3)

LUBBOCK, TEXAS
Amdt 11B 10SEP20

33°40'N-101°49'W LUBBOCK PRESTON SMITH INTL (LBB)
VOR/DME or TACAN RWY 26

SC-2, 31 DEC 2020 to 28 JAN 2021

SC-2, 31 DEC 2020 to 28 JAN 2021