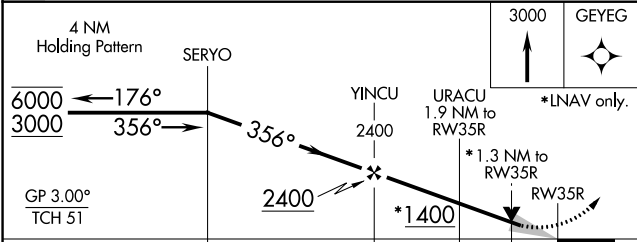
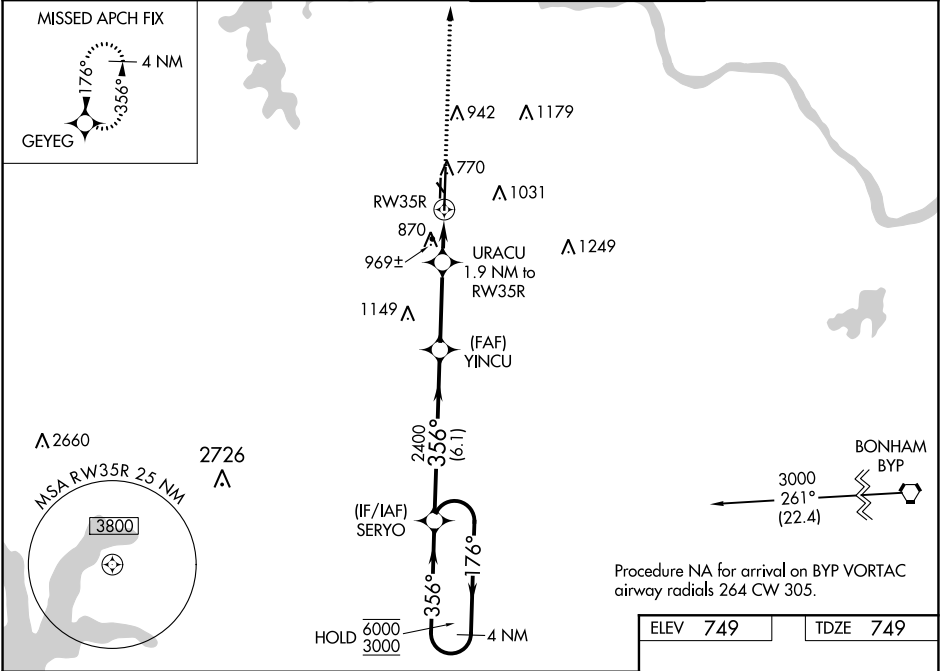


WAAS CH 65928 W35A	APP CRS 356°	Rwy Idg TDZE Apt Elev	9000 749 749
--	------------------------	-----------------------------	---

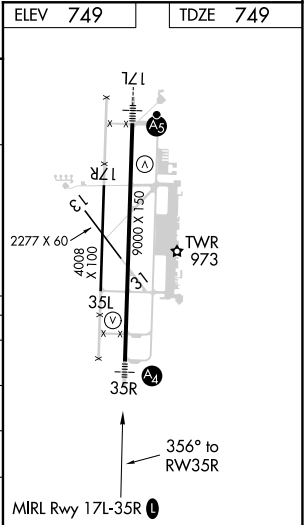
RNAV (GPS) RWY 35R
NORTH TEXAS RGNL/PERRIN FIELD (GYI)

RNP APCH.		MALS 	MISSED APPROACH: Climb to 3000 direct GEYEG and hold.
 Circling Rwy 13, 17R, 31, 35L NA at night. Inop table does not apply to LPV and LNAV/VNAV. For uncompensated Baro-VNAV systems, LNAV/VNAV NA below -16°C or above 54°C.			

ATIS 118.775	FORT WORTH CENTER 124.75 323.0	NORTH TEXAS TOWER ★ 120.575 (CTAF) 0 233.7	GND CON 124.125
------------------------	--	--	---------------------------



CATEGORY	A	B	C	D
LPV DA	949-3/4 200 (200-3/4)			
LNAV/VNAV DA	1294-1 5/8 545 (600-1 5/8)			
LNAV MDA	1220-3/4	471 (500-3/4)	1220-1 1/8	471 (500-1 1/8)
CIRCLING	1300-1	551 (600-1)	1400-1 3/4 651 (700-1 3/4)	1540-2 1/2 791 (800-2 1/2)



SC-2, 31 DEC 2020 to 28 JAN 2021

SC-2, 31 DEC 2020 to 28 JAN 2021