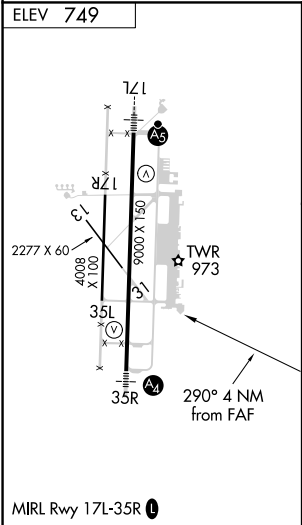
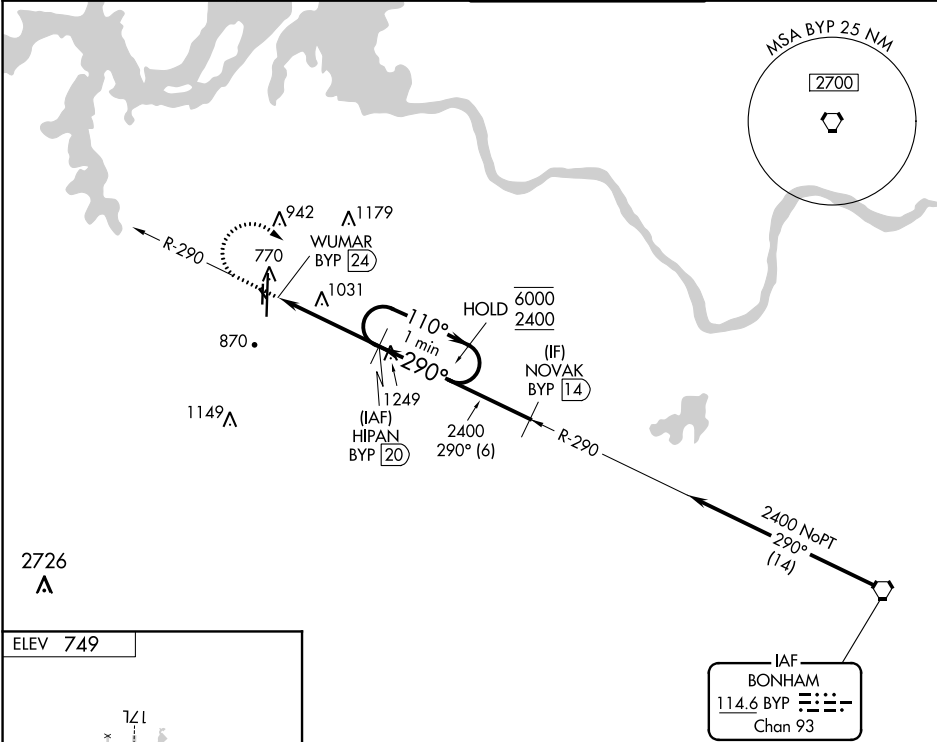


VORTAC BYP	APP CRS	Rwy Idg	N/A
114.6	290°	TDZE	N/A
Chan 93		Apt Elev	749

VOR-A

NORTH TEXAS RGNL/PERRIN FIELD (GYI)

DME required.		MISSED APPROACH: Climb to 2000 then climbing right turn to 2400 on BYP VORTAC R-290 to HIPAN/20 DME and hold.	
Circling Rwy 13, 17R, 31, 35L NA at night.			
ATIS 118.775	FORT WORTH CENTER 124.75 323.0	NORTH TEXAS TOWER ★ 120.575 (CTAF) 233.7	GND CON 124.125



Procedure NA for arrival on BYP VORTAC
airway radials 264 CW 305.

2000	2400	BYP R-290	HIPAN BYP 20	HIPAN BYP 20	One Minute Holding Pattern
CATEGORY	A	B	C	D	
CIRCLING	1340-1	591 (600-1)	1400-1¾ 651 (700-1¾)	1540-2½ 791 (800-2½)	

VOR-A