

WICHITA FALLS, TEXAS

HI-ILS or LOC/DME Z RWY 33L

LOC I-SPS <u>109.7</u>	APCH CRS 333°	Rwy Idg 33L 13,100 33C 10,002 TDZE 33L 1000 33C 989 Arpt Elev 1019
----------------------------------	-------------------------	---

JAL-454 [USAF]

SHEPPARD AFB/
WICHITA FALLS MUNI (KSPS)

DME required.

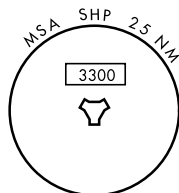
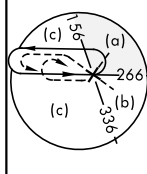
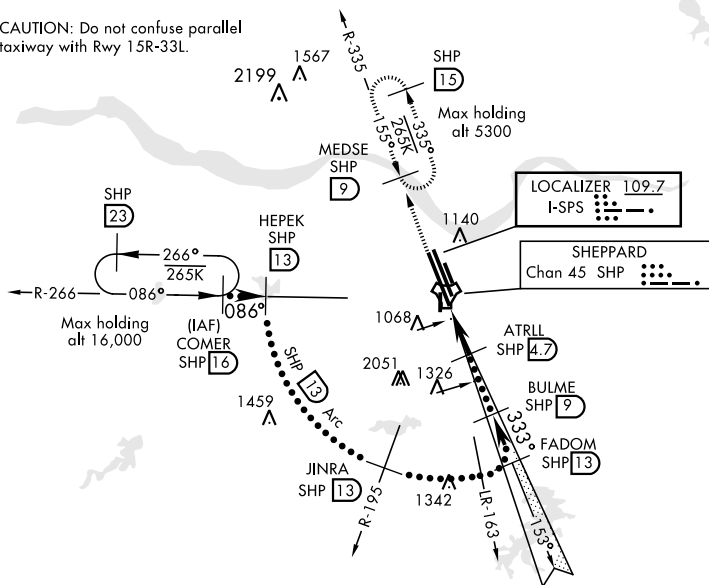
- T** * When ALS inop, increase CAT CDE vis to $\frac{3}{4}$ mile.
 ** When ALS inop, increase CAT CDE vis to 1 mile.
 *** Circling not authorized W of Rwy 15R-33L.



MISSED APPROACH: Climb and maintain 3300, intercept SHP TACAN R-335 to SHP R-335/9 DME (MEDSE) and hold.

ATIS ★ 132.05 269.9	SHEPPARD APP CON 118.2 269.025	SHEPPARD TOWER ★ 119.75 0 279.525(CTAF)	GND CON 125.5 289.4	CLNC DEL 121.2 282.225	ASR
------------------------	-----------------------------------	--	------------------------	---------------------------	-----

CAUTION: Do not confuse parallel taxiway with Rwy 15R-33L.



EMERG SAFE ALT 100 NM 4600

CATEGORY	C	D	E
S-ILS 33L *	1200-½	200	(200-½)
S-LOC 33L **	1340-½	340	(400-½)
SIDESTEP ** 33C	1340-⅝	351	(400-⅝)
*** C CIRCLING	1480-1½ 461 (500-1½)	2020-3 1001 (1100-3)	2080-3 1061 (1100-3)

WICHITA FALLS, TEXAS

33°59'N-98°30'W

SHEPPARD AFB/WICHITA FALLS MUNI (KSPS)

Amdt 7 08OCT20

HI-ILS or LOC/DME Z RWY 33L

SC-2, 31 DEC 2020 to 28 JAN 2021