
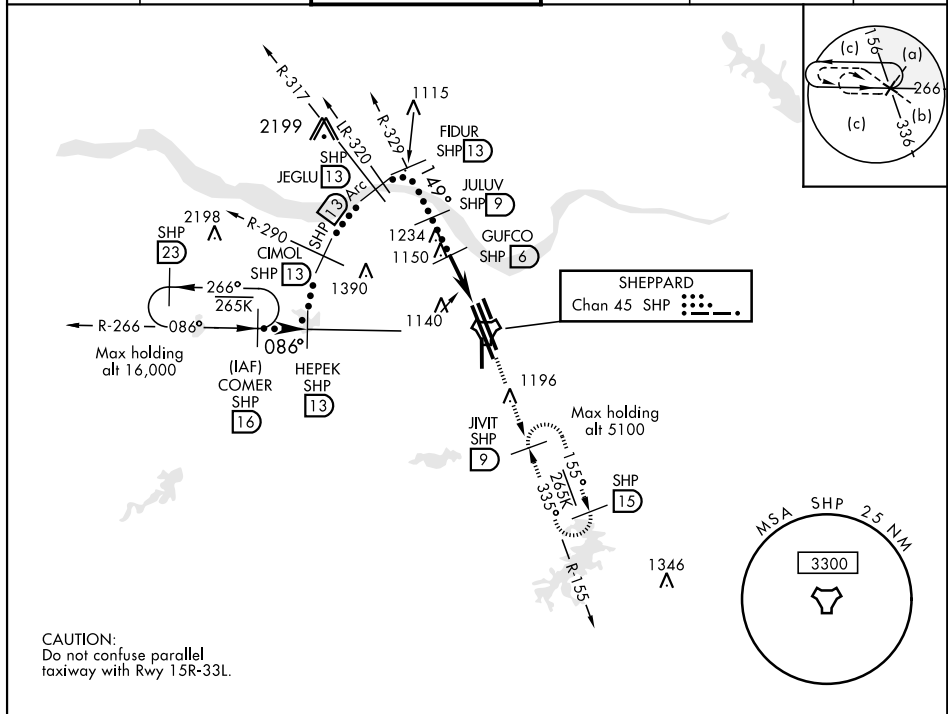


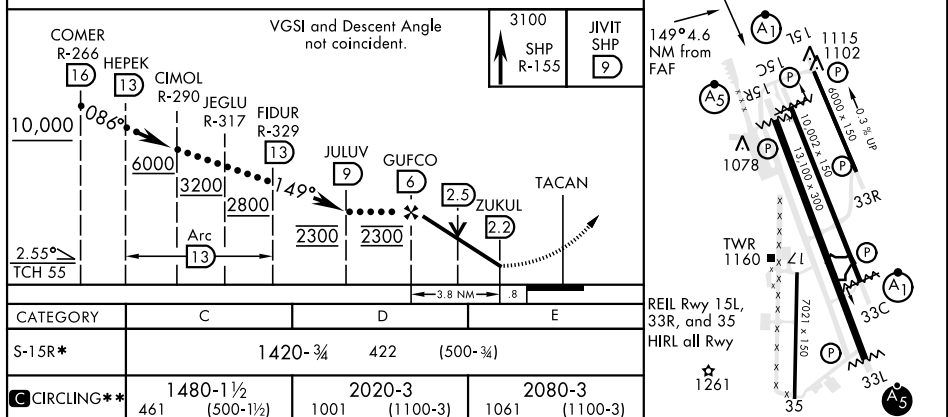
WICHITA FALLS, TEXAS

HI-TACAN RWY 15R

TACAN SHP Chan 45		APCH CRS 149°		Rwy Idg 13,100 THRE 998 Arpt Elev 1019		JAL-454 [USAF]		SHEPPARD AFB/WICHITA FALLS MUNI (KSPS)	
V * When ALS inop, increase CAT CDE vis to 1¼ miles. ** Circling not authorized W of Rwy 15R-33L.						MALSR 		MISSED APPROACH: Climb and maintain 3100, intercept SHP TACAN R-155 to SHP R-155/9 DME (JIVIT) and hold.	
ATIS ★ 132.05 269.9		SHEPPARD APP CON 118.2 269.025		SHEPPARD TOWER ★ 119.75 279.525 (CTAF)		GND CON 125.5 289.4		CLNC DEL 121.2 282.225	
ASR									



EMERG SAFE ALT 100 NM 4600



WICHITA FALLS, TEXAS

33°59'N-98°30'W

SHEPPARD AFB/WICHITA FALLS MUNI (KSPS)

HI-TACAN RWY 15R

SC-2, 31 DEC 2020 to 28 JAN 2021

SC-2, 31 DEC 2020 to 28 JAN 2021