

WICHITA FALLS, TEXAS

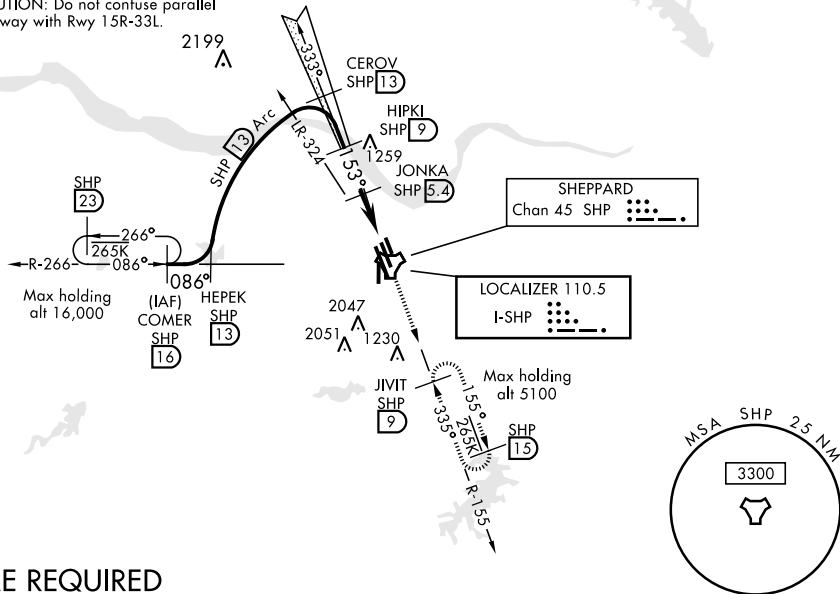
ILS or LOC/DME RWY 15C

LOC I-SHP 110.5	APCH CRS 153°	Rwy Ldg 15C 10,002 15R 13,100 THRE 15C 1003 15R 998 Arpt Elev 1019	ALS of LOC / DME Rwy 15C		
			AL-454 [USAF]	SHEPPARD AFB / WICHITA FALLS MUNI (KSPS)	
▽ * When ALS inop, increase all CATs vis to ¾ mile. ** When ALS inop, increase CAT AB vis to 1 mile, CAT CDE vis to 1½ miles.			ALS-F-1 Rwy 15C (A1)	MALSR Rwy 15R (A5)	MISSED APPROACH: Climb and maintain 3100, intercept SHP TACAN R-155 to SHP R-155/9 DME (JIVIT) and hold.
ATIS ★ 132.05 269.9	SHEPPARD APP CON 118.2 269.025	SHEPPARD TOWER ★ 119.75 0 279.525 (CTAF)	GND CON 125.5 289.4	CLNC DEL 121.2 282.225	ASR

*** When ALS inop, increase CAT AB vis to 1 mile,
CAT CDE vis to 1½ miles.

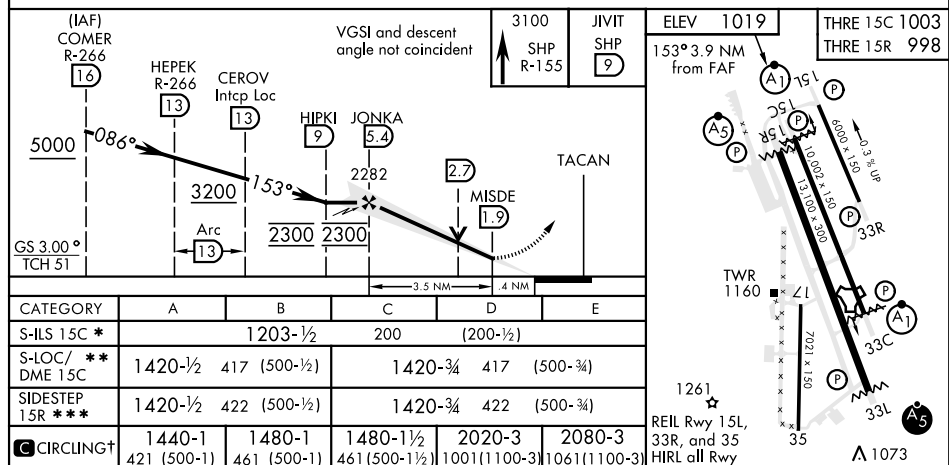
† Circling not authorized W of Rwy 15R-33L.

CAUTION: Do not confuse parallel
taxiway with Rwy 15R-33L.



DME REQUIRED

EMERG SAFE ALT 100 NM 4600



WICHITA FALLS, TEXAS 33°59'N-98°30'W

Amdt 8 09JAN14

SHEPPARD AFB/WICHITA FALLS MUNI (KSPS)

ILS or LOC/DME RWY 15C