

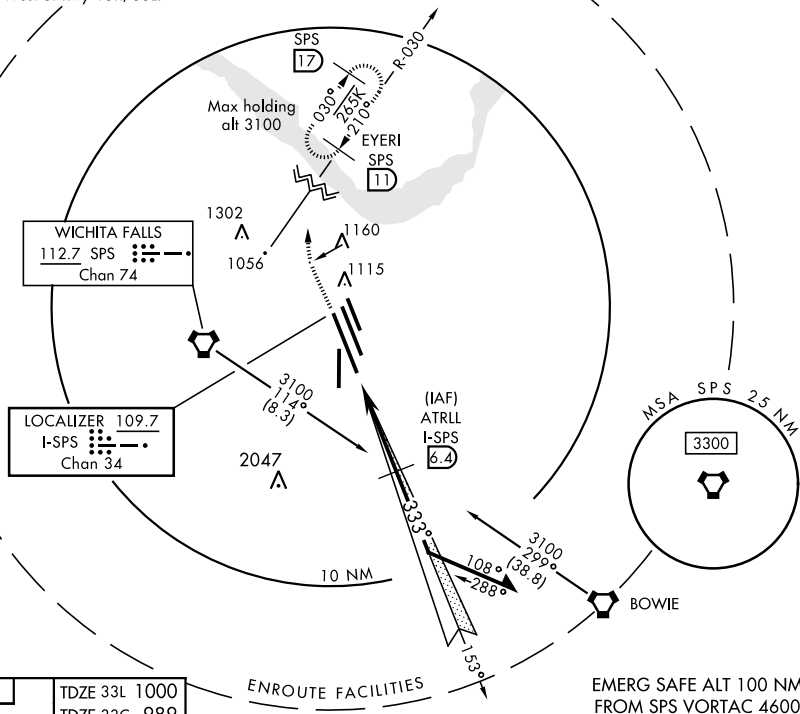


ILS or LOC/DME Y RWY 33L

LOC/DME I-SPS 109.7 Chan 34		APCH CRS 333°		Rwy Idg 33L 13,100 33C 10,002 TDZE 33L 1000 33C 989 Arpt Elev 1019		AL-454 [USAF]		SHEPPARD AFB/ WICHITA FALLS MUNI (KSPS)		
<div>▼ * When ALS inop, increase vis to ¾ mile. ** When ALS inop, increase vis to 1 mile. *** When ALS inop, increase vis to 1 mile.</div>					<div>MAISR </div>		<div>ALSF-1 </div>		MISSED APPROACH: Climb to 2200, then climbing right turn to 3100 via SPS VORTAC R-030 to EYERI (SPS R-030/11) and hold.	
ATIS ★ 132.05 269.9		SHEPPARD APP CON 118.2 269.025		SHEPPARD TOWER ★ 119.75 0 279.525 (CTAF)		GND CON 125.5 289.4		CLNC R-030 121.2 282.225		ASR

† Circling NA West of Rwy 15R/33L.

[illegible]

WICHITA FALLS, TEXAS 33°59'N-98°30'W

SHEPPARD AFB/WICHITA FALLS MUNI (KSPS)

ILS or LOC/DME Y RWY 33L

SC-2, 31 DEC 2020 to 28 JAN 2021