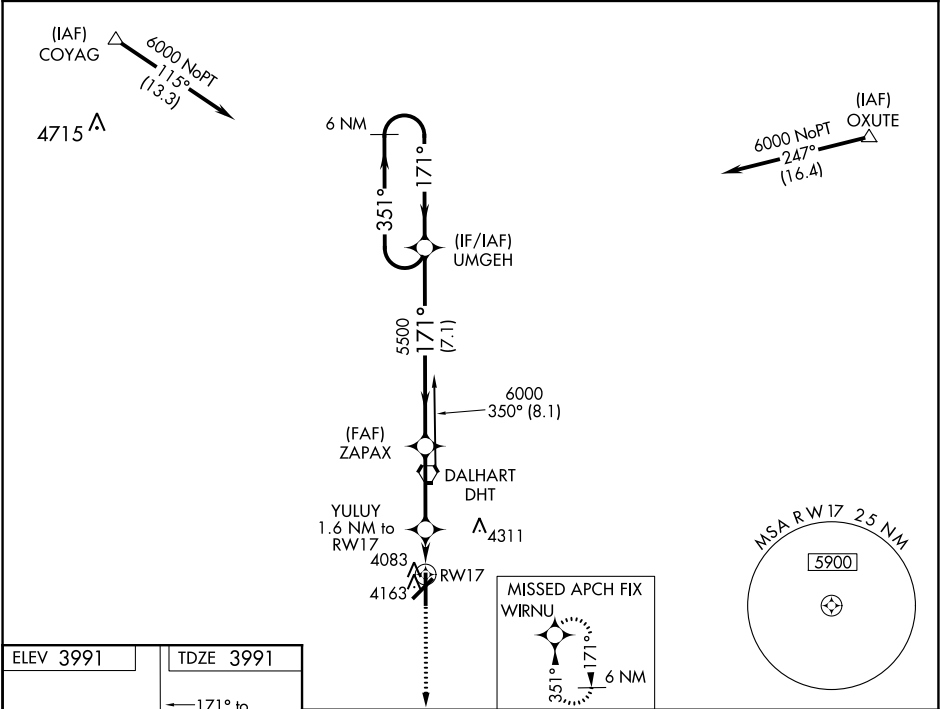


WAAS CH 97435 W17A	APP CRS 171°	Rwy Idg TDZE 3991 Apt Elev 3991
--	------------------------	---

RNAV (GPS) RWY 17
DALHART MUNI (DHT)

▼ For uncompensated Baro-VNAV systems, LNAV/VNAV NA below -16°C (4°F) or above 51°C (124°F). Circling NA west of Rwy 17-35. DME/DME RNP-0.3 NA.	MISSED APPROACH: Climb to 6000 direct WIRNU and hold.
--	---

ASOS 134.075	ALBUQUERQUE CENTER 127.85 285.475	UNICOM 122.95 (CTAF) 0
------------------------	---	----------------------------------



ELEV 3991	TDZE 3991
-----------	-----------

REIL Rwy 17 and 35
MIRL Rwy 35-21 and 17-35 0

<div> <div>6000</div> <div>↑</div> </div> <div> <div>WIRNU</div> <div>✦</div> </div>	<div> <div>VGSI and RNAV glidepath not coincident (VGSI Angle 3.00/TCH 25).</div> <div>YULUY 1.6 NM to RW17</div> <div>ZAPAX 5500</div> <div>UMGEH 6 NM Holding Pattern</div> </div>		<div> <div>351° →</div> <div>← 171°</div> <div>6000</div> <div>GP 3.00° TCH 50</div> </div>	
*LNAV only	<div> <div>RW17</div> <div>*1 NM to RW17</div> <div>*4540</div> <div>5500</div> <div>171°</div> </div>			
	<div> <div>1</div> <div>0.6</div> <div>3 NM</div> <div>7.1 NM</div> </div>			
CATEGORY	A	B	C	D
LPV DA	4241-¾ 250 (300-¾)			
LNAV/VNAV DA	4270-⅞	279 (300-⅞)		
LNAV MDA	4340-1	349 (400-1)		
C CIRCLING	4380-1 389 (400-1)	4660-1 669 (700-1)	4660-1¾ 669 (700-1¾)	4660-2 669 (700-2)