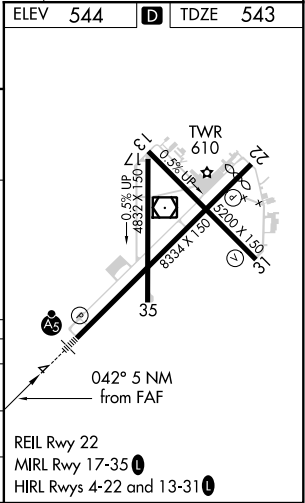
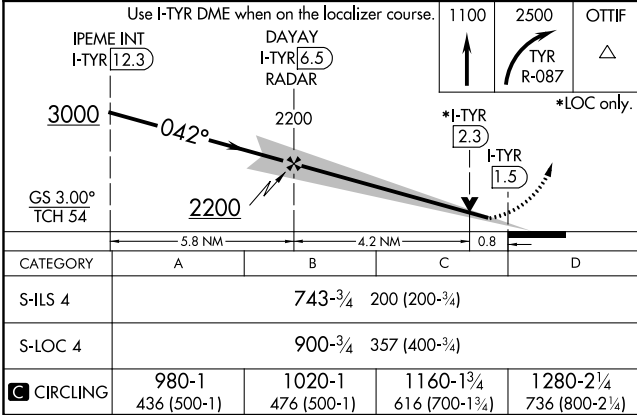
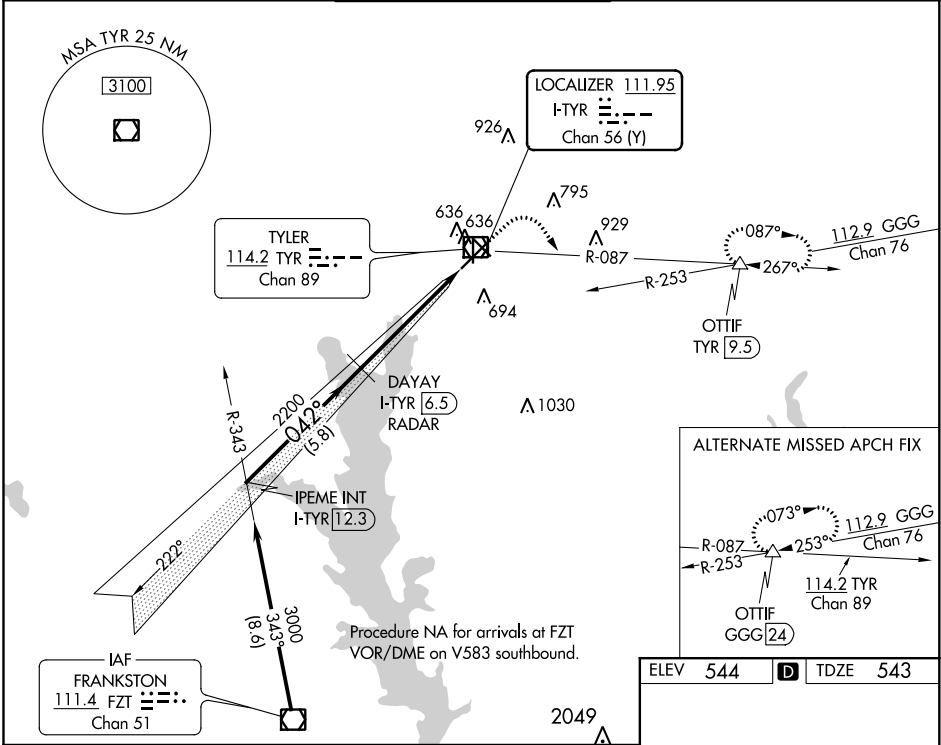


LOC/DME I-TYR 111.95 Chan 56 (Y)	APP CRS 042°	Rwy Idg TDZE Apt Elev	7748 543 544
---	------------------------	-----------------------------	---

ILS or LOC RWY 4
TYLER POUNDS RGNL (TYR)

DME required. Inop table does not apply to S-ILS 4. For inop ALS increase S-LOC 4 all Cats visibility to 1 SM.		MALSR 	MISSED APPROACH: Climb to 1100 then climbing right turn to 2500 on TYR VOR/DME R-087 to OTTIF/TYR 9.5 DME and hold.	
ATIS 126.25	LONGVIEW APP CON ★ 128.75 379.15	POUNDS TOWER ★ 120.1 (CTAF) 0 257.8		GND CON 121.9
				UNICOM 122.95



SC-2, 31 DEC 2020 to 28 JAN 2021

SC-2, 31 DEC 2020 to 28 JAN 2021