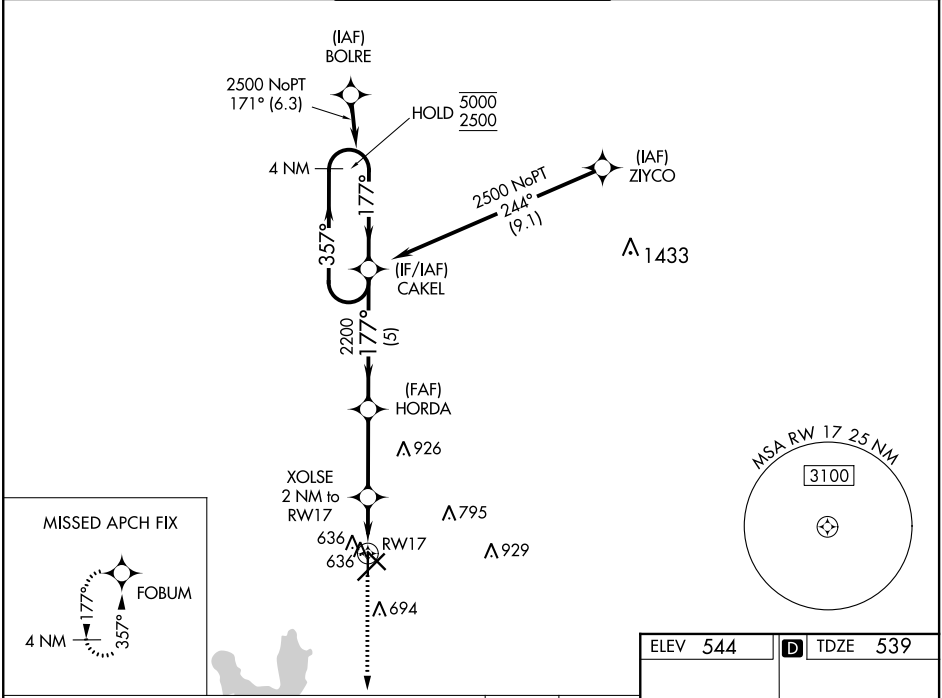


WAAS CH 58337 W17A	APP CRS 177°	Rwy Idg 4832 TDZE 539 Apt Elev 544
--	------------------------	---

RNAV (GPS) RWY 17

TYLER POUNDS RGNL (TYR)

RNP APCH.		MISSED APPROACH: Climb to 2500 direct FOBUM and hold.		
Rwy 17 helicopter visibility reduction below ¾ NA. For uncompensated Baro-VNAV systems, LNAV/VNAV NA below -5°C or above 54°C.				
ATIS 126.25	LONGVIEW APP CON★ 128.75 379.15	POUNDS TOWER★ 120.1(CTAF) 257.8	GND CON 121.9	UNICOM 122.95



4 NM Holding Pattern		CAKEL	HORDA	XOLSE 2 NM to RW17	RW17
5000 2500		357°	177°	177°	
GP 3.00° TCH 45					
		5 NM	3.1 NM	0.9 NM	1.1 NM
CATEGORY	A	B	C	D	
LPV DA		789-1	250 (300-1)		
LNAV/VNAV DA		818-1	279 (300-1)		
LNAV MDA		900-1	361 (400-1)		
CIRCLING	980-1 436 (500-1)	1020-1 476 (500-1)	1160-1¾ 616 (700-1¾)	1280-2¼ 736 (800-2¼)	

