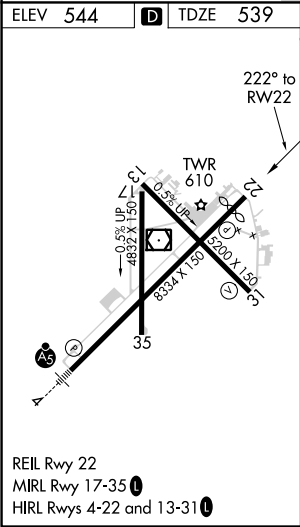
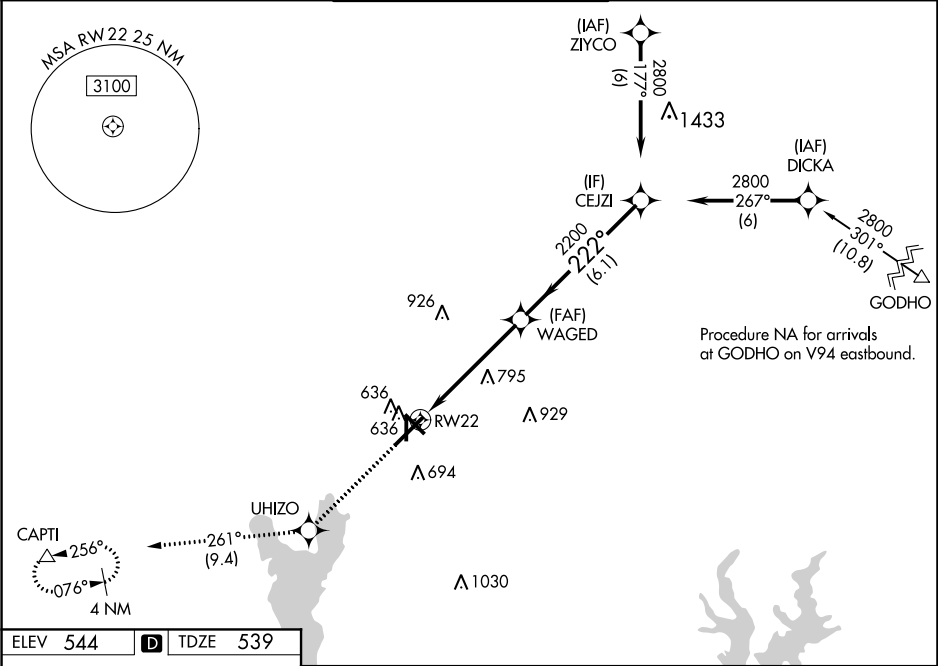





WAAS CH 45514 W22A	APP CRS 222°	Rwy Idg TDZE Apt Elev	7734 539 544
--	------------------------	-----------------------------	---

RNAV (GPS) RWY 22

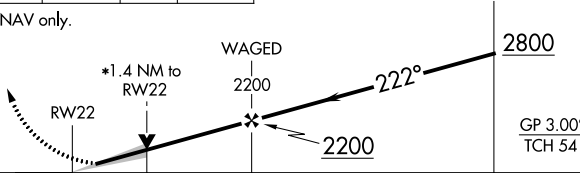
TYLER POUNDS RGNL (TYR)

RNP APCH.		MISSED APPROACH: Climb to 2500 direct UHIZO and on track 261° to CAPTI and hold.		
▼ For uncompensated Baro-VNAV systems, LNAV/VNAV NA below -5°C or above 54°C.				
ATIS 126.25	LONGVIEW APP CON★ 128.75 379.15	POUNDS TOWER★ 120.1(CTAF) 257.8	GND CON 121.9	UNICOM 122.95



2500	UHIZO	CAPTI
		
tr 261°		

*LNAV only.



CEJZI
2800

WAGED
2200

222°


2200

GP 3.00°
TCH 54

RWY22

*1.4 NM to
RWY22

1.4 NM 3.7 NM 6.1 NM

CATEGORY	A	B	C	D
LPV DA	739- ³ / ₄		200 (200- ³ / ₄)	
LNAV/ VNAV DA	807- ⁷ / ₈		268 (300- ⁷ / ₈)	
LNAV MDA	1040-1	501 (500-1)	1040-1 ¹ / ₈	501 (500-1 ¹ / ₈)
 CIRCLING	1040-1	496 (500-1)	1160-1 ³ / ₄ 616 (700-1 ³ / ₄)	1280-2 ¹ / ₄ 736 (800-2 ¹ / ₄)