

TYLER, TEXAS

AL-622 (FAA)

20310

WAAS CH 61101 W31A	APP CRS 312°	Rwy Idg 5200 TDZE 544 Apt Elev 544
--	------------------------	---

RNAV (GPS) RWY 31
TYLER POUNDS RGNL (TYR)

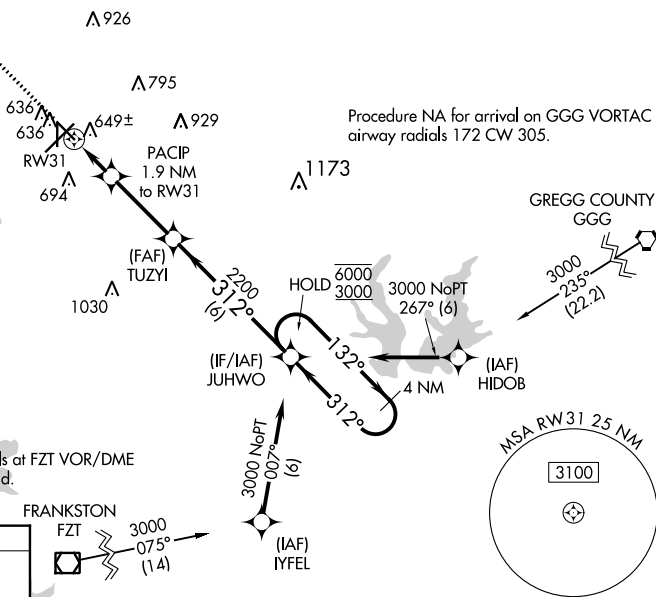
RNP APCH.

T Rwy 31 helicopter visibility reduction below $\frac{3}{4}$ SM NA.
A For uncompensated Baro-VNAV systems, LNAV/VNAV NA below -5°C or above 54°C.

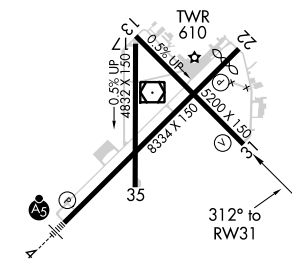
MISSED APPROACH: Climb to 2200 direct JEQU and hold.

ATIS 126.25	LONGVIEW APP CON★ 128.75 379.15	POUNDS TOWER★ 120.1 (CTAF) 0 257.8	GND CON 121.9	UNICOM 122.95
----------------	------------------------------------	---------------------------------------	------------------	------------------

MISSED APCH FIX



ELEV 544	D	TDZE 544
----------	----------	----------



REIL Rwy 22
MIRL Rwy 17-35 **L**
HIRL Rwy 4-22 and 13-31 **L**

2200 ↑	IJEQU ✦	PACIP 1.9 NM to RW31 TUZYI 2200 JUHWO 4 NM Holding Pattern *1 NAV only. *1 NM to RW31 RW31 *1 200 2200 132° → 6000 ← 312° 3000 GP 3.00° TCH 54			
1 NM 0.9 NM 3.1 NM 6 NM					
CATEGORY	A	B	C	D	
LPV DA	794-3 $\frac{3}{4}$		250 (300-3 $\frac{3}{4}$)		
LNAV/ VNAV DA	821-7 $\frac{7}{8}$		277 (300-7 $\frac{7}{8}$)		
LNAB MDA	900-1		356 (400-1)		
C CIRCLING	980-1 436 (500-1)	1020-1 476 (500-1)	1160-1 $\frac{3}{4}$ 616 (700-1 $\frac{3}{4}$)	1280-2 $\frac{1}{4}$ 736 (800-2 $\frac{1}{4}$)	

TYLER, TEXAS

Amdt 3 08NOV18

32°21'N-95°24'W

TYLER POUNDS RGNL (TYR)
RNAV (GPS) RWY 31

SC-2, 31 DEC 2020 to 28 JAN 2021