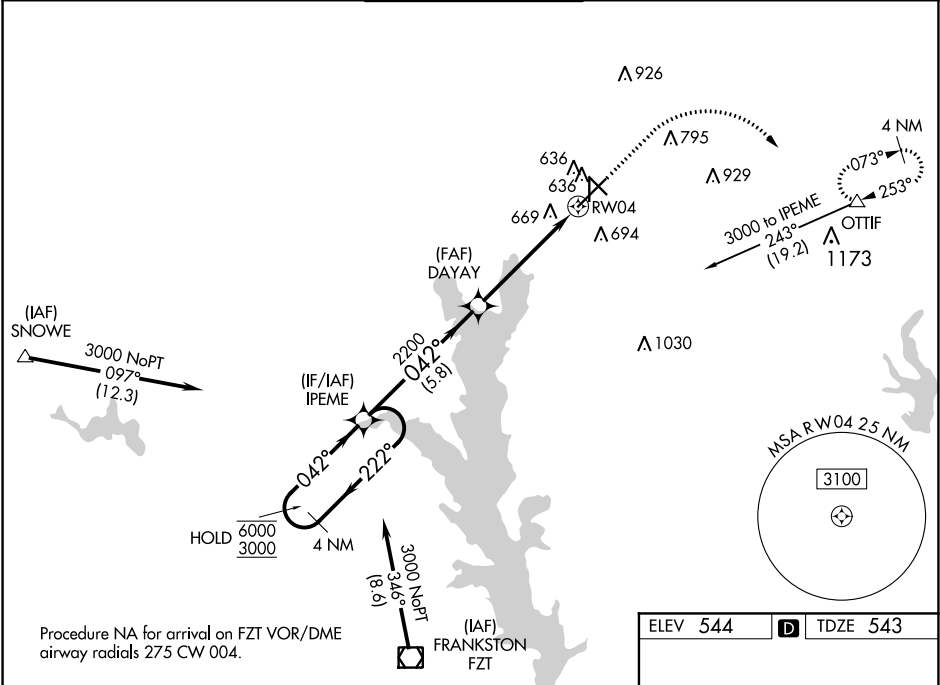


WAAS CH <b>40014</b> <b>W04A</b>	APP CRS <b>042°</b>	Rwy Idg TDZE <b>543</b> Apt Elev <b>544</b>
--	------------------------	---

RNAV (GPS) RWY 4  
TYLER POUNDS RGNL (TYR)

RNP APCH: ▼ ▲ Inop table does not apply to LPV DA. For uncompensated Baro-VNAV systems, LNAV/VNAV NA below -7°C or above 54°C. For inop ALS, increase LNAV/VNAV all Cats visibility to 1 1/2 SM, LNAV all Cats visibility to 1 SM.	MALSR ▲ MISSED APPROACH: Climb to 1100 then climbing right turn to 2500 direct OTTIF and hold.
--	--

ATIS <b>126.25</b>	LONGVIEW APP CON ★ <b>128.75 379.15</b>	POUNDS TOWER ★ <b>120.1 (CTAF) 257.8</b>	GND CON <b>121.9</b>	UNICOM <b>122.95</b>
-----------------------	--	---	-------------------------	-------------------------



4 NM Holding Pattern IPEME		1100	2500	OTTIF
6000 ← 222° 3000 042° →		*LNAV only.		
GP 3.00° TCH 54		DAYAY 2200		
		*1 NM to RW04		
		RW04		
		5.8 NM		
		4 NM		
		1 NM		
CATEGORY	A	B	C	D
LPV DA		743-3/4	200 (200-3/4)	
LNAV/VNAV DA		944-3/4	401 (400-3/4)	
LNAV MDA		920-3/4	377 (400-3/4)	
CIRCLING	980-1 436 (500-1)	1020-1 476 (500-1)	1160-1 3/4 616 (700-1 3/4)	1280-2 1/4 736 (800-2 1/4)

