

TYLER, TEXAS

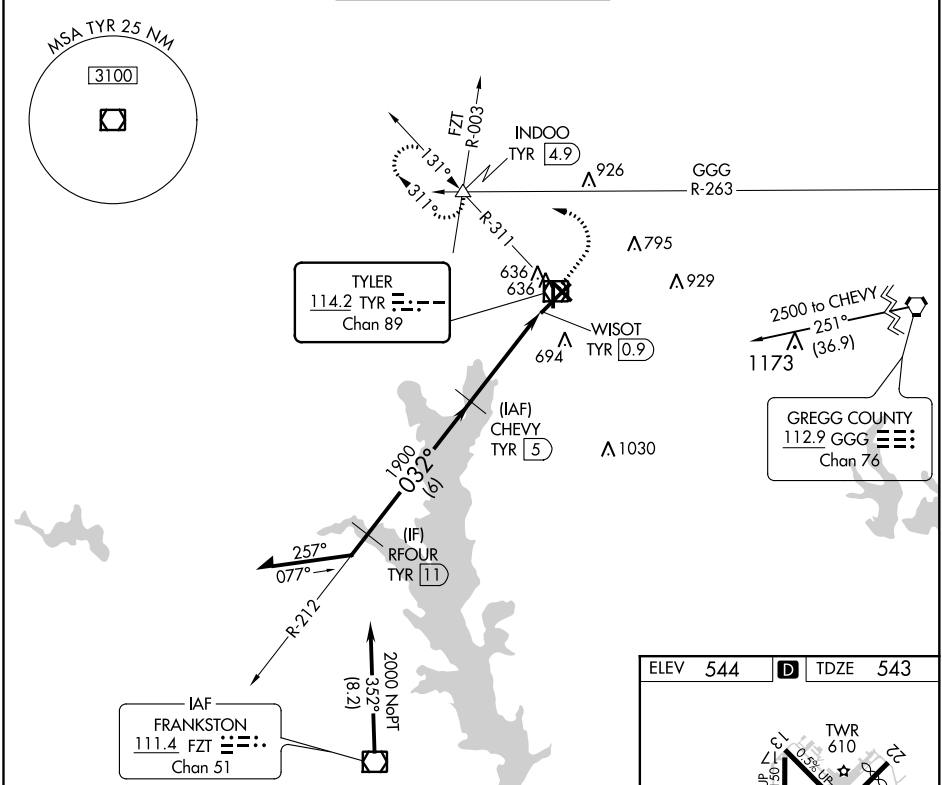
AL-622 (FAA)

20310

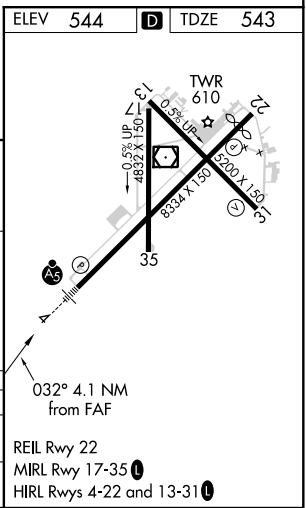
| | | | |
|-------------|---------|----------|------|
| VOR/DME TYR | APP CRS | Rwy Idg | 7748 |
| 114.2 | 032° | TDZE | 543 |
| Chan 89 | | Apt Elev | 544 |

VOR RWY 4
TYLER POUNDS RGNL (TYR)

| | | | | |
|---------------|--------------------|--------------------|--|--------|
| DME required. | | MALSR | MISSED APPROACH: Climb to 1000 then climbing left turn to 2200 on TYR VOR/DME R-311 to INDOO INT/TYR 4.9 DME and hold. | |
| | | | | |
| ATIS | LONGVIEW APP CON ★ | POUNDS TOWER ★ | GND CON | UNICOM |
| 126.25 | 128.75 379.15 | 120.1 (CTAF) 257.8 | 121.9 | 122.95 |



| | | | | | | | |
|--|----------------------|-----------------------|-------------------------|-------------------------|--|--|--|
| <div>Remain within 10 NM</div> <div><div>CHEVY TYR 5</div><div>2100</div></div> <div><div>2000</div><div>212°</div><div>032°</div><div>1900</div></div> <div><div>3.00°</div><div>TCH 55</div></div> <div><div>TYR 2</div><div>WISOT TYR 0.9</div></div> <div><div>1000</div><div>2200</div><div>INDOO</div></div> <div><div>3 NM</div><div>1.1 NM</div></div> | | | | | | | |
| CATEGORY | A | B | C | D | | | |
| S-4 | 940-1 397 (400-1) | | 940-1⅛ 397 (400-1⅛) | | | | |
| CIRCLING | 980-1 436 (500-1) | 1020-1 476 (500-1) | 1160-1¾ 616 (700-1¾) | 1280-2¼ 736 (800-2¼) | | | |



TYLER, TEXAS
Amdt 5A 15AUG19

32°21'N-95°24'W

TYLER POUNDS RGNL (TYR)
VOR RWY 4