

VORTAC MQP  
**117.7**  
Chan **124**

APP CRS  
**309°**

Rwy Idg  
TDZE **974**  
Apt Elev **974**

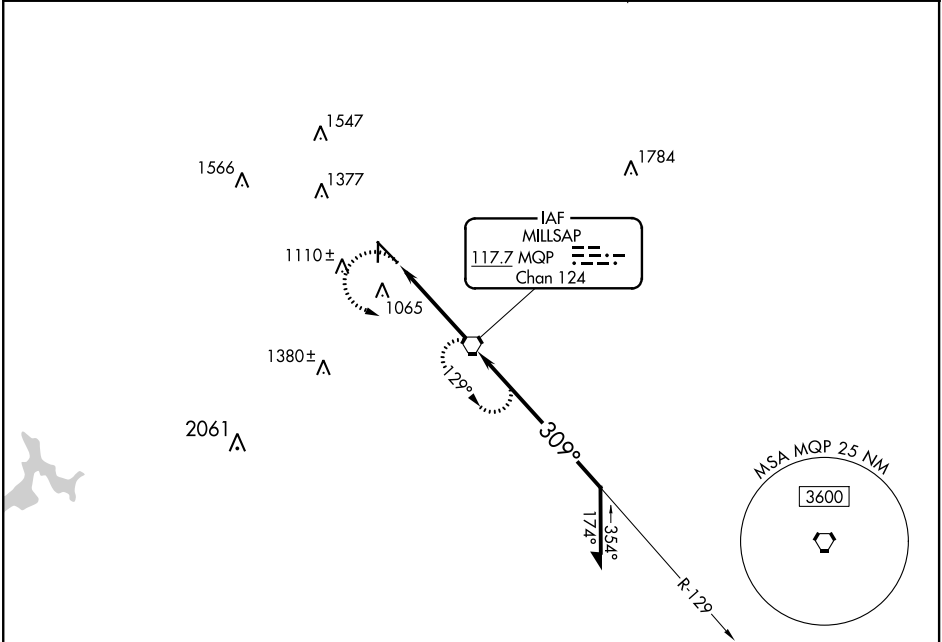
VOR RWY 31  
MINERAL WELLS RGNL (MWL)

NA

Circling to Rwy 17 NA at night. When local altimeter setting not received, use Fort Worth Meacham altimeter setting.

MISSED APPROACH: Climbing left turn to 2800 direct MQP VORTAC and hold.

ASOS <b>135.075</b>	FORT WORTH CENTER <b>127.0 360.6</b>	UNICOM <b>122.725 (CTAF) 0</b>
------------------------	-----------------------------------------	-----------------------------------



2800 MQP

VGSI and descent angles not coincident (VGSI Angle 3.00/TCH 53).

MQP VORTAC

Remain within 10 NM

3000

309°

129°

2500

3.49°

TCH 45

4 NM

ELEV 974 TDZE 974

309° 4 NM from FAF

MIRL Rwy 13-31 and 17-35

FAF to MAP 4 NM

Knots	60	90	120	150	180
Min:Sec	4:00	2:40	2:00	1:36	1:20

CATEGORY	A	B	C	D
S-31	1340-1	366 (400-1)		1340-1¼ 366 (400-1¼)
CIRCLING	1420-1 446 (500-1)	1460-1 486 (500-1)	1740-2¼ 766 (800-2¼)	1740-2½ 766 (800-2½)
FORT WORTH MEACHAM INTL ALTIMETER SETTING MINIMUMS				
S-31	1460-1	486 (500-1)	1460-1¼ 486 (500-1¼)	1460-1½ 486 (500-1½)
CIRCLING	1540-1 566 (600-1)	1560-1 586 (600-1)	1820-2¼ 846 (900-2¼)	1820-2½ 846 (900-2½)