

DALLAS, TEXAS

AL-742 (FAA)

20338

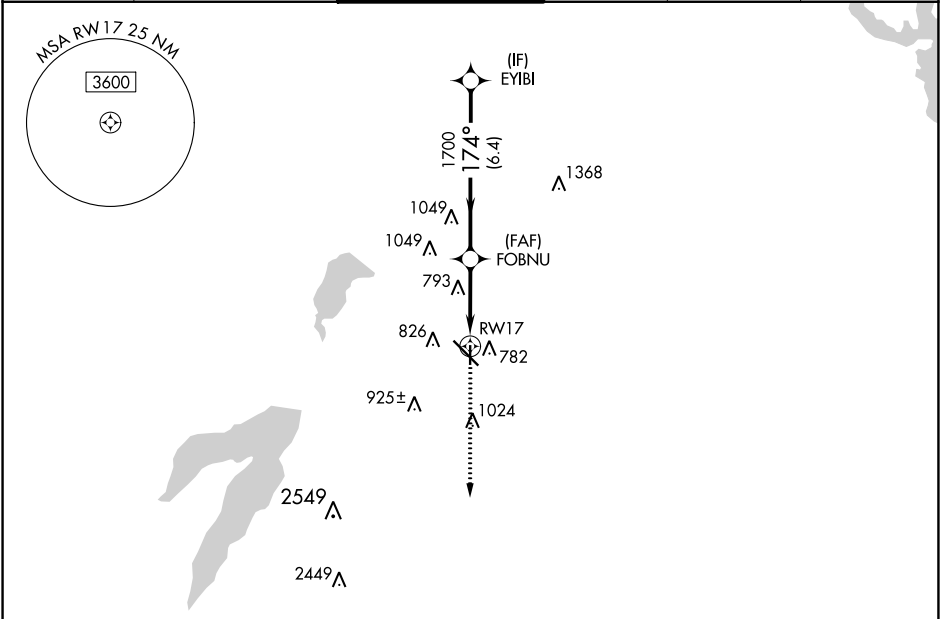
APP CRS	Rwy Idg	3800
174°	TDZE	658
	Apt Elev	661

RNAV (GPS) RWY 17

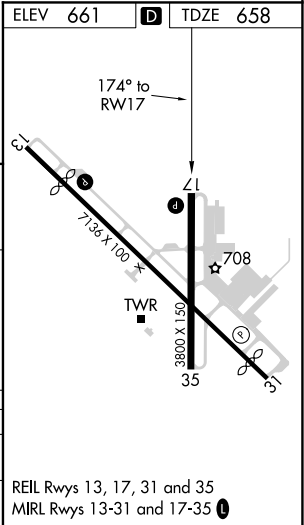
DALLAS EXECUTIVE (RBD)

RNP APCH.	MISSED APPROACH: Climb to 3000 direct HOBMI and hold.
▼ ▲ Rwy 17 helicopter visibility reduction below ¾ SM NA.	

ATIS 126.35	REGIONAL APP CON 125.2 343.65	EXECUTIVE TOWER ★ 127.25 (CTAF) 0	GND CON 119.475	CLNC DEL 118.625	UNICOM 122.95
----------------	----------------------------------	--------------------------------------	--------------------	---------------------	------------------



	EYBI	3000	174°	FOBNU	1700	1.3 NM to RWY 17	3.03° TCH 43	1.3 NM to RWY 17	3000	HOBMI
CATEGORY	A	B	C	D						
LNAV MDA	1100-1	442 (500-1)	1100-1 3/8 442 (500-1 3/8)	1100-1 1/2 442 (500-1 1/2)						
CIRCLING	1160-1 499 (500-1)	1220-1 559 (600-1)	1340-2 679 (700-2)	1400-2 1/4 739 (800-2 1/4)						



DALLAS, TEXAS
Orig-B 03DEC20

32°41'N-96°52'W

DALLAS EXECUTIVE (RBD)

RNAV (GPS) RWY 17

SC-2, 31 DEC 2020 to 28 JAN 2021

SC-2, 31 DEC 2020 to 28 JAN 2021