

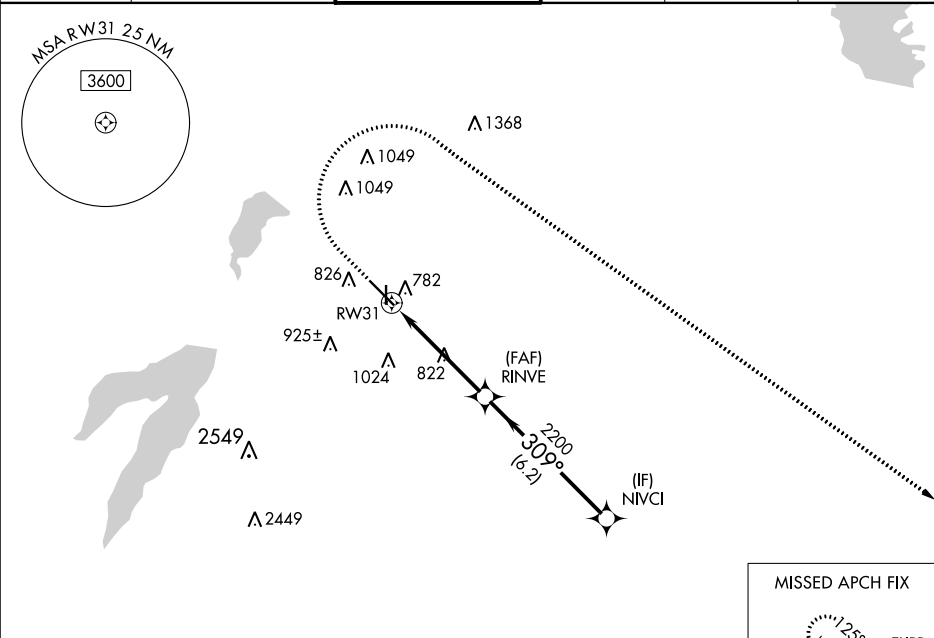
WAAS CH 42699 W31A	APP CRS 309°	Rwy Idg TDZE 660 Apt Elev 661
--	------------------------	---

RNAV (GPS) RWY 31

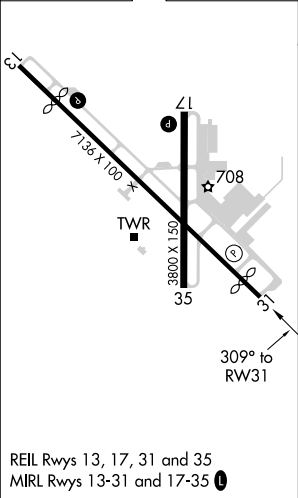
DALLAS EXECUTIVE (RBD)

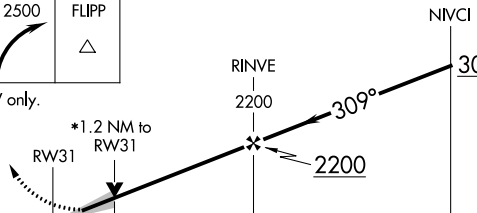
RNP APCH.	MISSED APPROACH: Climb to 1200 then climbing right turn to 2500 direct FLIPP and hold.
▼ For uncompensated Baro-VNAV systems, LNAV/VNAV NA below -2°C or above 54°C.	

ATIS 126.35	REGIONAL APP CON 125.2 343.65	EXECUTIVE TOWER ★ 127.25 (CTAF) 0	GND CON 119.475	CLNC DEL 118.625	UNICOM 122.95
-----------------------	---	---	---------------------------	----------------------------	-------------------------



ELEV 661	D	TDZE 660
----------	----------	----------



			4 NM 305° FLIPP	
1200 ↑	2500 ↷	FLIPP △		
*LNAV only.				
*1.2 NM to RW31				
RW31				
RINVE 2200				
NVCI 3000				
GP 3.00° TCH 45				
1.2 3.5 NM 6.2 NM				
CATEGORY	A	B	C	D
LPV DA	860-3/4 200 (200-3/4)			
LNAV/ VNAV DA	993-1 333 (400-1)			
LNAV MDA	1080-1 420 (500-1)		1080-1 1/8 420 (500-1 1/8)	
CIRCLING	1160-1 499 (500-1)	1220-1 559 (600-1)	1340-2 679 (700-2)	1400-2 1/4 739 (800-2 1/4)