

WAAS CH 63001 W35A	APP CRS 355°	Rwy Idg 6002 TDZE 532 Apt Elev 548
--	------------------------	---

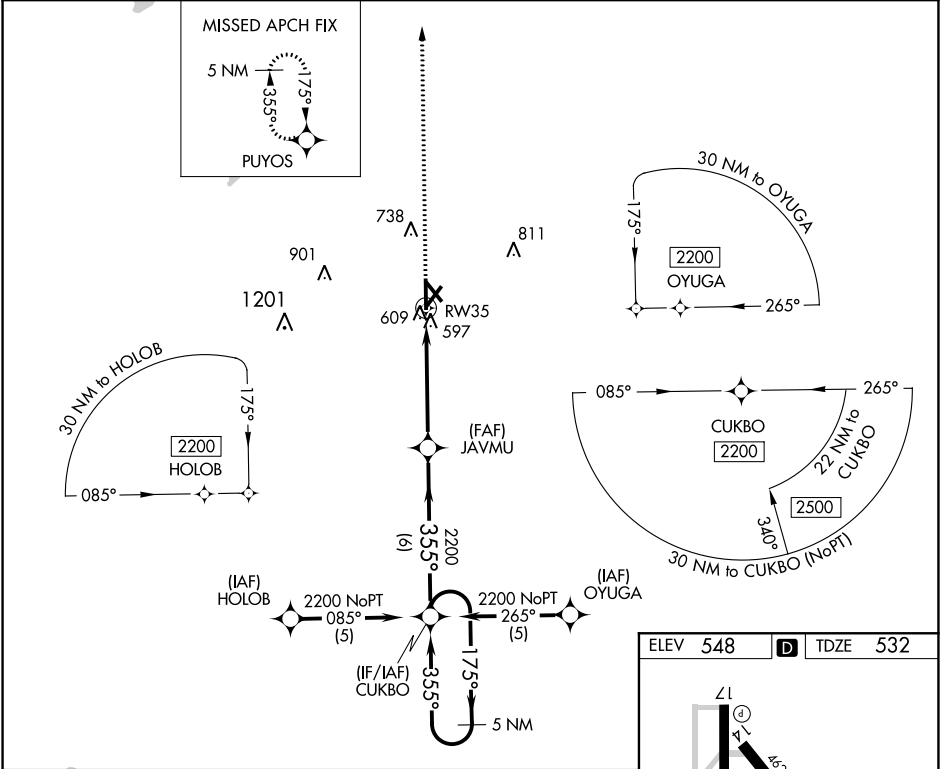
RNAV (GPS) RWY 35
COX FIELD (PRX)

▼ DME/DME RNP-0.3 NA. Visibility reduction by helicopters NA. If local altimeter setting not received, use Sulphur Springs altimeter setting and increase all DAs/MDAs 80 feet.

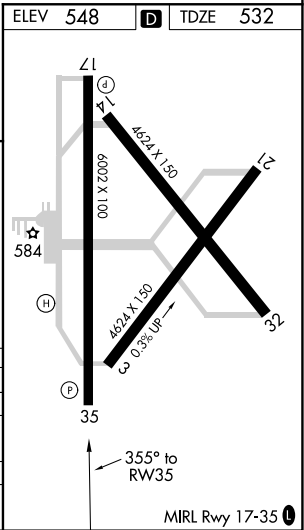
▲ For uncompensated BARO-VNAV systems, LNAV/VNAV NA below -16°C (4°F) or above 47°C (118°F). BARO-VNAV and VDP NA when using Sulphur Springs altimeter setting.

MISSED APPROACH: Climb to 2200 direct PUYOS and hold.

AWOS-3PT 119.675	FORT WORTH CENTER 124.875	UNICOM 122.975 (CTAF) 0
----------------------------	-------------------------------------	-----------------------------------



2200	PUYOS	JAVMU	CUKBO	5 NM Holding Pattern
<p>* 0.9 NM to RW35</p> <p>* LNAV only</p> <p>GP 3.00° TCH 53</p>				
CATEGORY	A	B	C	D
LPV DA		782-3/4	250 (300-3/4)	
LNAV/ VNAV		925-1 1/4	393 (400-1 1/4)	
LNAV MDA		860-1	328 (400-1)	
CIRCLING	960-1 1/4 412 (500-1 1/4)	1000-1 1/4 452 (500-1 1/4)	1000-1 1/2 452 (500-1 1/2)	1100-2 552 (600-2)



SC-2, 31 DEC 2020 to 28 JAN 2021

SC-2, 31 DEC 2020 to 28 JAN 2021