

20142

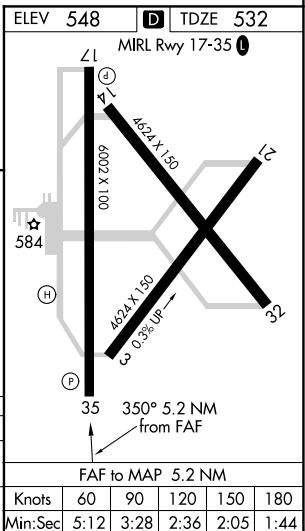
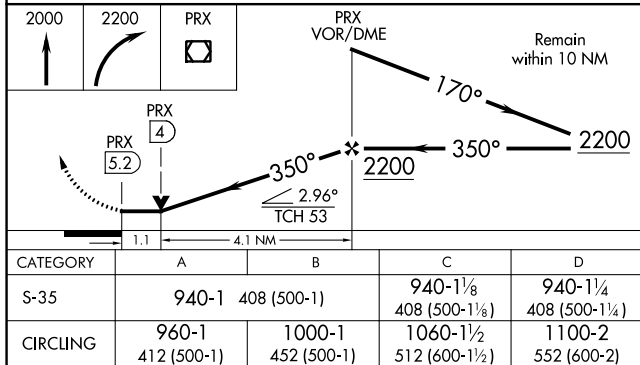
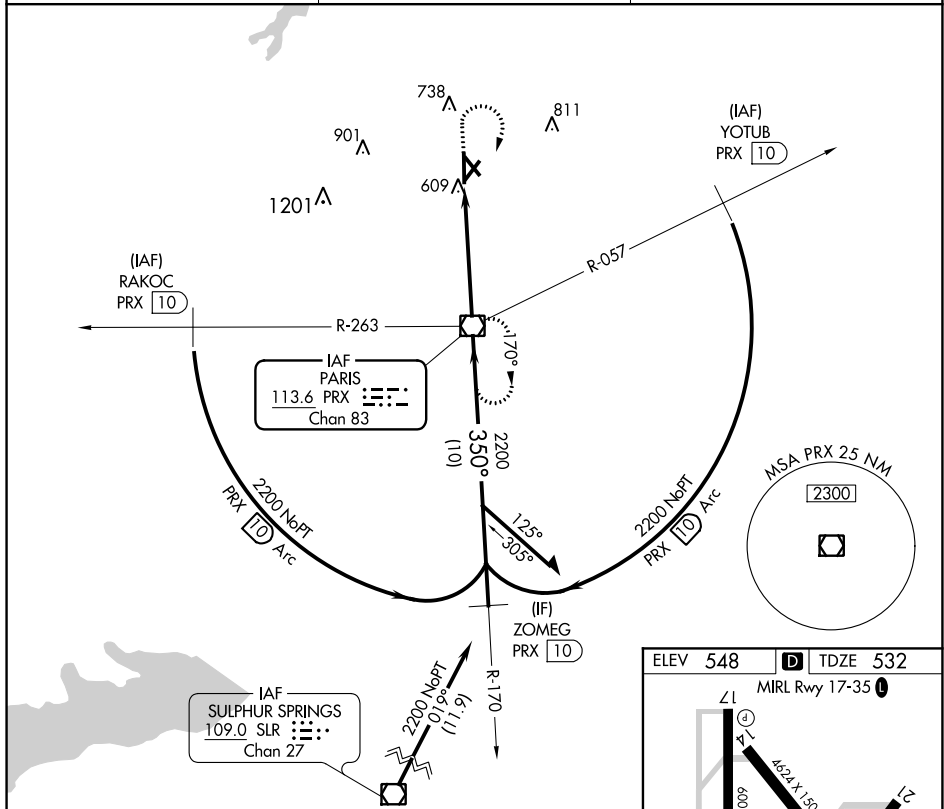
VOR/DME PRX <u>113.6</u> Chan 83	APP CRS 350°	Rwy Idg 6002 TDZE 532 Apt Elev 548
--	------------------------	---

VOR RWY 35
COX FIELD (PRX)

T If local altimeter setting not received, use Sulphur Springs altimeter setting and increase all MDAs 80 feet. Visibility reduction by helicopters NA. VDP NA when using Sulphur Springs altimeter setting.

MISSED APPROACH: Climb to 2000 then climbing right turn to 2200 direct PRX VOR/DME.

AWOS-3PT 119.675	FORT WORTH CENTER 124.875	UNICOM 122.975 (CTAF) 0
----------------------------	-------------------------------------	--



PARIS, TEXAS
Amdt 2A 18JUL19

33° 38' N-95° 27' W

COX FIELD (PRX)
VOR RWY 35

SC-2, 31 DEC 2020 to 28 JAN 2021