

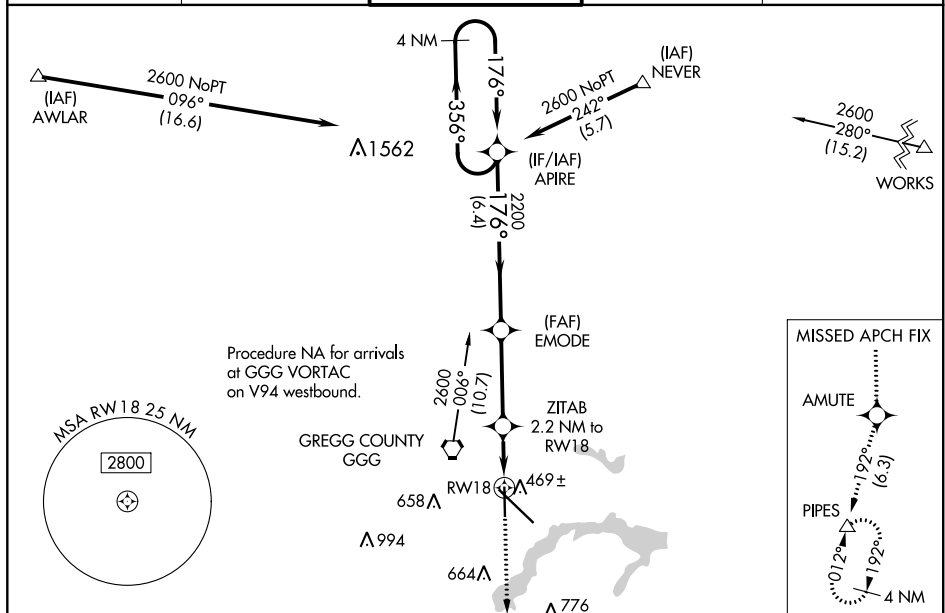
WAAS CH <b>99426</b> <b>W18A</b>	APP CRS <b>176°</b>	Rwy Idg <b>6109</b> TDZE <b>356</b> Apt Elev <b>365</b>
--	------------------------	---

RNAV (GPS) RWY 18  
EAST TEXAS RGNL (GGG)

**⚠** Baro-VNAV NA when using Gilmer altimeter setting. For uncompensated Baro-VNAV systems, LNAV/VNAV NA below -15°C (5°F) or above 41°C (105°F). DME/DME RNP-0.3 NA. Visibility reduction by helicopters NA. When local altimeter setting not received, use Gilmer altimeter setting and increase all DA 59 feet and all MDA 60 feet, increase LPV visibility all Cats ¼ mile and LNAV/VNAV visibility all Cats ½ mile and LNAV visibility Cat C and D ¼ mile.

**MISSED APPROACH:**  
Climb to 2400 direct  
AMUTE and on track  
192° to PIPES and hold.

ATIS <b>119.65</b>	LONGVIEW APP CON* <b>128.75 379.15</b>	EASTEX TOWER* <b>119.2 (CTAF) 0377.05</b>	GND CON <b>121.6</b>	UNICOM <b>122.95</b>
-----------------------	---	--	-------------------------	-------------------------



ELEV 365 D TDZE 356

176° to RW18

GP 3.00° TCH 53

419

36

TWR 457

1000 X 150

60 X 60

15

19

4 NM Holding Pattern

APIRE

2600

356°

176°

EMODE

2200

ZITAB\*

2.2 NM to RW18

1 NM to \*RW18

RW18

2400

AMUTE

tr 192°

PIPES

\*LNAV only

\*1100

6.4 NM 3.4 NM 1.2 NM 1.0

CATEGORY	A	B	C	D
LPV DA	630-7/8 274 (300-7/8)			
LNAV/VNAV DA	652-1 296 (300-1)			
LNAV MDA	720-1 364 (400-1)			
CIRCLING	860-1 495 (500-1)		860-1½ 495 (500-1½)	920-2 555 (600-2)

HIRL Rwy 13-31 I

MIRL Rwy 18-36