

VORTAC GGG 112.9 Chan 76	APP CRS 125°	Rwy Idg 9200 TDZE 358 Apt Elev 365
--	------------------------	---

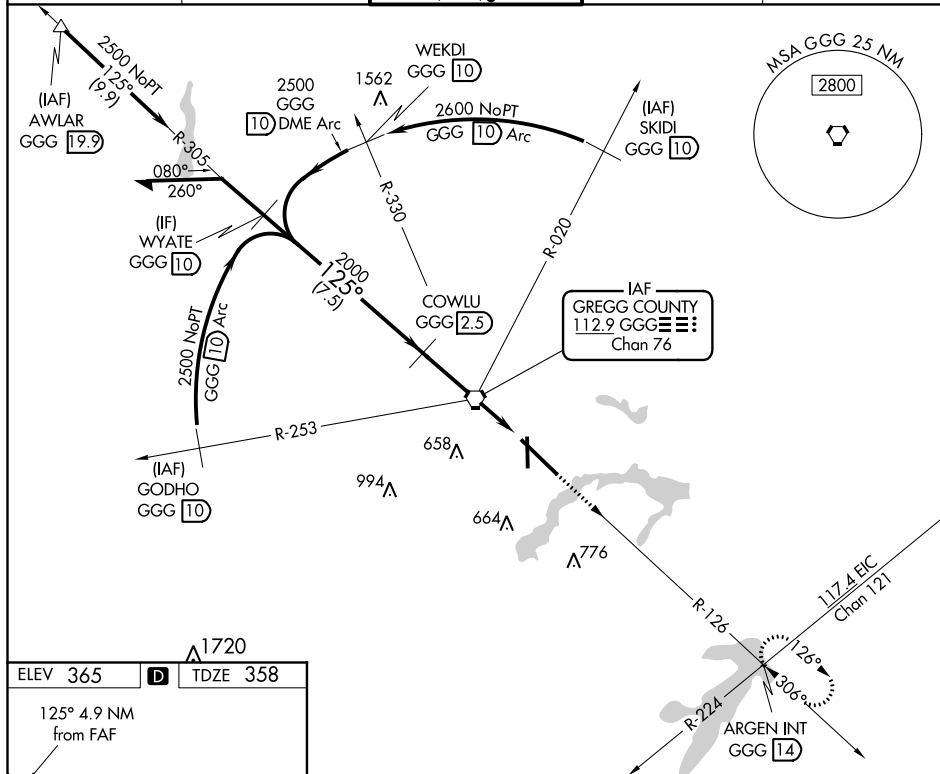
VOR/DME or TACAN RWY 13
EAST TEXAS RGNL (GGG)

T For inoperative MALS/R, increase S-13 Cat E visibility to $1\frac{3}{4}$. When local altimeter setting not received, use Gilmer altimeter setting and increase all MDA 60 feet and visibility Cat D and E $\frac{1}{4}$ mile. VDP NA when using Gilmer altimeter setting. For inoperative MALS/R when using Gilmer altimeter setting increase S-13 Cat E visibility to 2 miles.

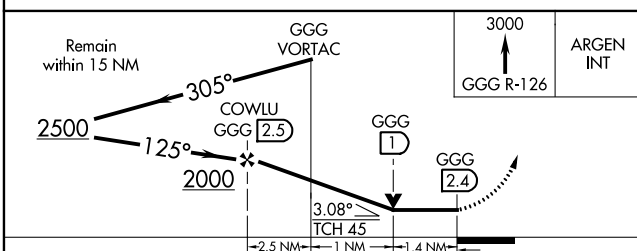
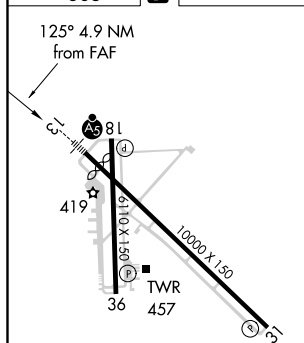
MALSR

MISSED APPROACH:
Climb to 3000 via GGG
R-126 to ARGEN Int/GGG
14 DME and hold.

ATIS	LONGVIEW APP CON★	EASTEX TOWER★	GND CON	UNICOM
119.65	128.75 379.15	119.2 (CTAF) 0 377.05	121.6	122.95



ELEV 365		TDZE 358
----------	--	----------



CATEGORY	A	B	C	D	E
S-13	860/24 502 (500-½)		860/50 502 (500-1)		860/60 502 (500-1¼)
CIRCLING	860-1 495 (500-1)		860-1½ 495 (500-1½)	920-2 555 (600-2)	1080-2½ 715 (800-2½)