

WAAS CH 78225 W35A	APP CRS 346°	Rwy Idg 5840 TDZE 2355 Apt Elev 2380
--	------------------------	---

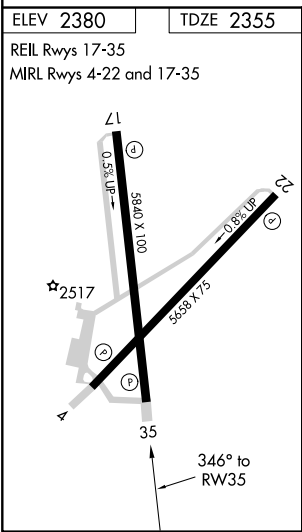
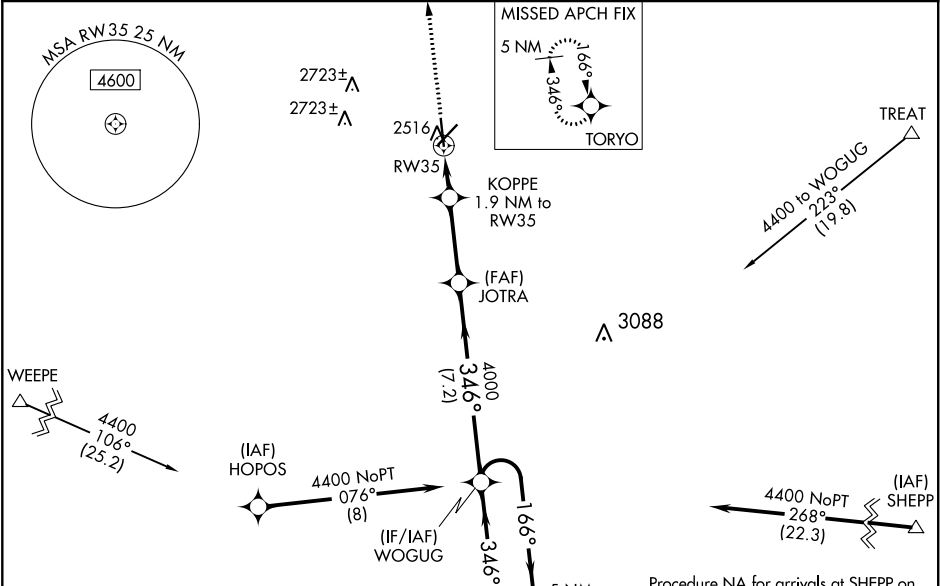
RNAV (GPS) RWY 35

AVENGER FIELD (SWW)

⚠ When VGSI inop, Circling Rwy 17 and 22 NA at night. Baro-VNAV NA when using Snyder altimeter setting. For uncompensated Baro-VNAV systems, LNAV/VNAV NA below -19°C (-2°F) or above 29°C (84°F). When VGSI inop, Straight-in/Circling Rwy 35 NA at night. DME/DME RNP-0.3 NA. Visibility reduction by helicopters NA. When local altimeter setting is not received, use Snyder altimeter setting and increase all DA 72 feet and all MDA 80 feet. Increase LNAV/VNAV visibility all Cats ¼ mile and LNAV visibility Cats C and D ⅛ mile.

MISSED APPROACH:
Climb to 4400 direct TORYO and hold.

AWOS-3 119.025	ABILENE APP CON 127.2 282.3	UNICOM 122.8 (CTAF)
--------------------------	---------------------------------------	-------------------------------



4400	TORYO	VGSI and RNAV glidepath not coincident (VGSI Angle 3.00°/TCH 40).				5 NM	Holding Pattern
*LNAV only.	KOPPE 1.9 NM to RW35	JOTRA 4000	WOGUG	166°	4400	GP 3.00°	TCH 52
	1.9 NM	3.1 NM	7.2 NM				
CATEGORY	A	B	C	D			
LPV DA	2605-1	250 (300-1)					
LNAV/VNAV DA	2713-1½	358 (400-1½)					
LNAV MDA	2820-1	465 (500-1)	2820-1½	465 (500-1½)			
CIRCLING	2880-1	500 (500-1)	2880-1½	500 (500-1½)	2940-2	560 (600-2)	