

WAAS CH <b>72925</b> <b>W04A</b>	APP CRS <b>035°</b>	Rwy Idg <b>5658</b> TDZE <b>2380</b> Apt Elev <b>2380</b>
--	------------------------	---

RNAV (GPS) RWY 4

AVENGER FIELD (SWW)

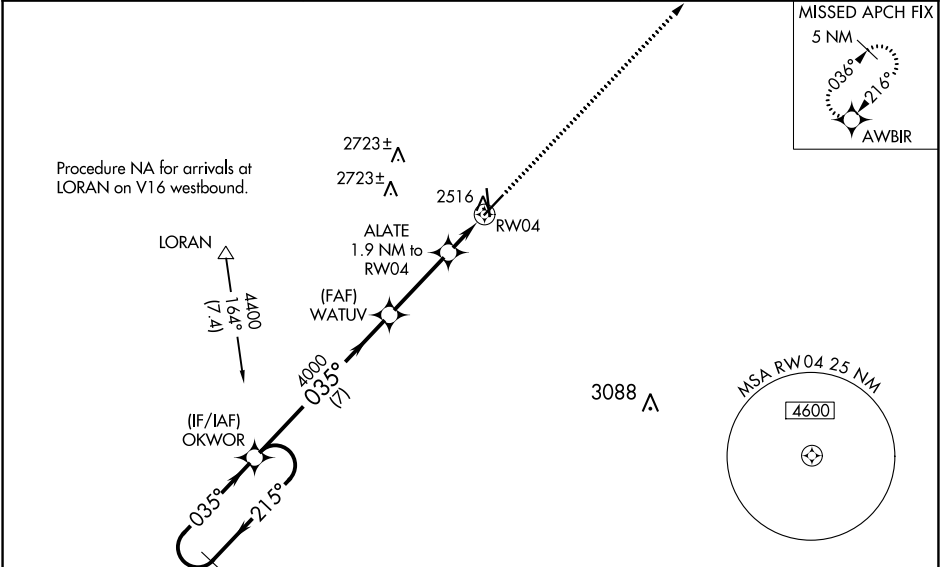
▼

⚠

Baro-VNAV NA when using Snyder altimeter setting. For uncompensated Baro-VNAV systems, LNAV/VNAV NA below -19°C (-2°F) or above 29°C (84°F). DME/DME RNP-0.3 NA. Visibility reduction by helicopters NA. When local altimeter setting not received, use Snyder altimeter setting and increase all DA 72 feet and all MDA 80 feet. Increase LPV visibility all Cats ½ mile. Increase LNAV/VNAV visibility all Cats ¼ mile and LNAV visibility Cats C and D ⅝ mile. When VGSI inop, Straight-in/Circling Rwy 4 procedure NA at night. When VGSI inop, Circling Rwy 17 and 22 NA at night.

MISSED APPROACH:  
Climb to 4400 direct  
AWBIR and hold.

AWOS-3 <b>119.025</b>	ABILENE APP CON <b>127.2 282.3</b>	UNICOM <b>122.8 (CTAF)</b>
--------------------------	---------------------------------------	-------------------------------



5 NM Holding Pattern OKWOR

4400 ← 215° / 035° →

GP 3.00° TCH 40

WATUV 4000

ALATE 1.9 NM to RW04

\*LNAV only.

RW04

7 NM, 3.1 NM, 1.9 NM

CATEGORY	A	B	C	D
LPV DA	2630-1 250 (300-1)			
LNAV/VNAV DA	2727-1 ⅛ 347 (400-1 ⅓)			
LNAV MDA	2820-1 440 (500-1)		2820-1 ¼ 440 (500-1 ¼)	
CIRCLING	2880-1 500 (500-1)		2880-1 ½ 2940-2 560 (600-2)	

ELEV 2380 TDZE 2380

4400 AWBIR

2517

35

035° to RW04

REIL Rwy 17-35

MIRL Rwy 4-22 and 17-35