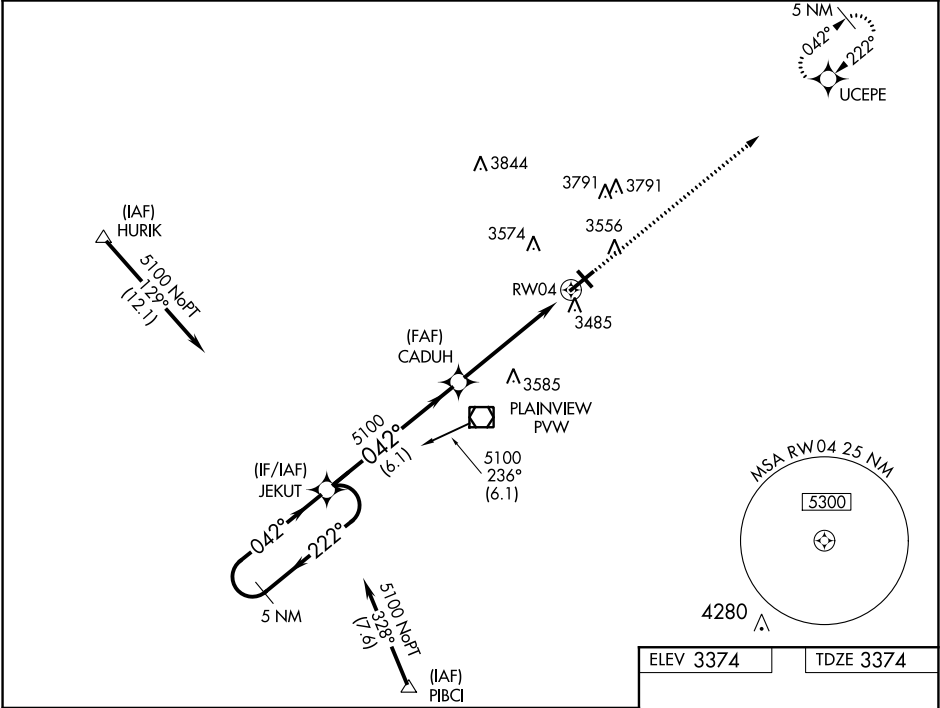


WAAS CH 53302 W04A	APP CRS 042°	Rwy Idg 5997 TDZE 3374 Apt Elev 3374
--	------------------------	---

RNAV (GPS) RWY 4
HALE COUNTY (PVW)

RNP APCH.		MISSED APPROACH: Climb to 5000, direct UCEPE and hold.	
For uncompensated Baro-VNAV systems, LNAV/VNAV NA below -21°C or above 42°C. VDP and Baro-VNAV NA when using Lubbock altimeter setting. Rwy 4 helicopter visibility reduction below ¾ SM NA. When local altimeter setting is not received, use Lubbock altimeter setting: increase all DA 83 feet and increase all LPV and LNAV/VNAV visibility ¼ mile, increase all MDA 100 feet and LNAV Cat C/D and Circling Cat C visibility ¼ mile.			
ASOS 119.675	LUBBOCK APP CON 119.2 351.8	CLNC DEL 121.7	UNICOM 123.0 (CTAF) 0



5NM

Holding Pattern

VGSI and RNAV glidepath not coincident

(VGSI Angle 3.50/TCH 51).

5000

UCEPE

JEKUT

CADUH

5100

←222°

042°→

5100

↗

*1 NM to RW04

RW04

*LNAV only.

GP 3.00°

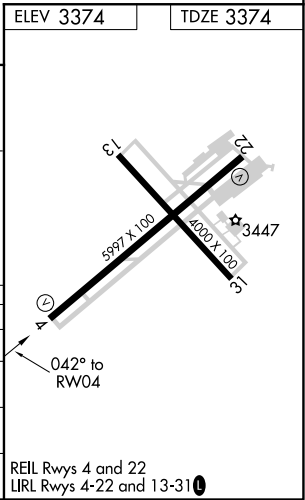
TCH 45

6.1 NM

4.3 NM

1 NM

CATEGORY	A		B	C	D
LPV DA			3624-1	250 (300-1)	
LNAV/ VNAV DA			3730-1¼	356 (400-1¼)	
LNAV MDA	3800-1	426 (500-1)	3800-1¼	426 (500-1¼)	
CIRCLING	3920-1¼ 546 (600-1¼)	3940-1¼ 566 (600-1¼)	3940-1½ 566 (600-1½)	3940-2 566 (600-2)	



SC-2, 31 DEC 2020 to 28 JAN 2021

SC-2, 31 DEC 2020 to 28 JAN 2021