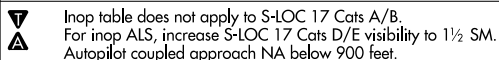


LOC/DME I-GVT <b>110.5</b> Chan <b>42</b>	APP CRS <b>176°</b>	Rwy Idg <b>8030</b> TDZE <b>534</b> Apt Elev <b>535</b>
---	------------------------	---

ILS Z or LOC Z RWY 17  
MAJORS (GVT)

DME required.



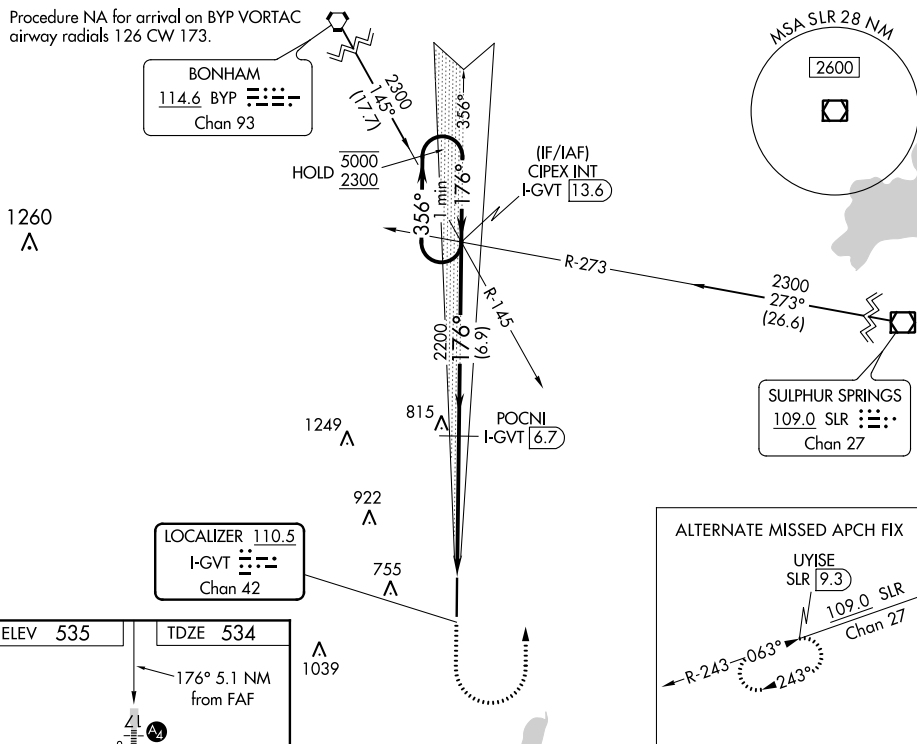
MALS



**MISSED APPROACH:** Climb to 1000 then climbing left turn to 2300 on heading 355° and BYP VORTAC R-145 to CIPEX INT/I-GVT 13.6 DME and hold.

AWOS-3 133.425	FORT WORTH CENTER 132.025 360.75	MAJORS TOWER ★ 118.65 (CTAF) 0 385.425	GND CON 121.7 335.8	UNICOM 122.95
-------------------	-------------------------------------	---	------------------------	------------------

Procedure NA for arrival on BYP VORTAC  
airway radials 126 CW 173.

[illegible]

1000 ↑	2300 hdg 355°	RYP R-145	CIPEX INT	VGSI and ILS glidepath not coincident (VGSI Angle 3.00/TCH 74).				
*LOC only.				One Minute Holding Pattern				
CATEGORY	A	B	C	D	E			
S-ILS 17	734-1 200 (200-1)							
S-LOC 17	1060-1	526 (600-1)	1060-1½ 526 (600-1¼)					
<b>C</b> CIRCLING	1060-1	525 (600-1)	1060-1½ 525 (600-1½)	1240-2¼ 705 (800-2¼)	1300-2¾ 765 (800-2¾)			