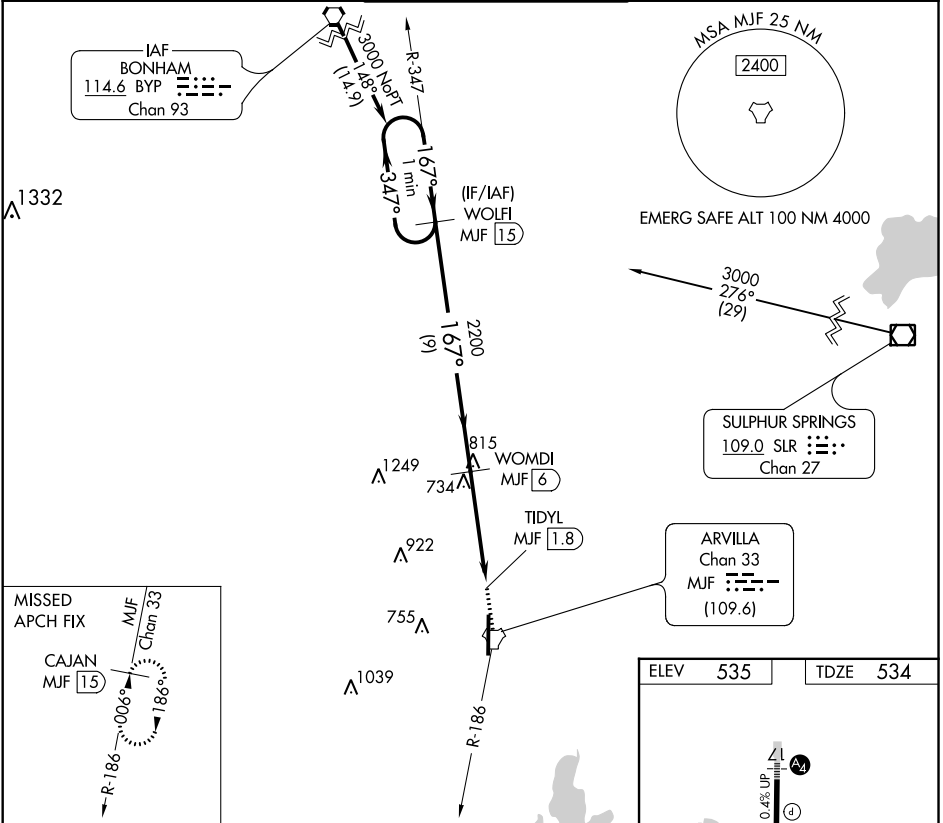


TACAN MJF Chan 33 (109.6)	APP CRS 167°	Rwy Idg TDZE Apt Elev	8030 534 535
--	------------------------	-----------------------------	---

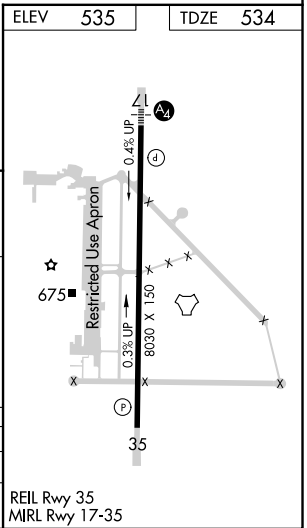
TACAN RWY 17
MAJORS (GVT)

<p>▼ Visibility reduction by helicopters NA. When local altimeter setting not received, use Terrell altimeter setting; increase all MDA 80 feet, increase S-17 Cats C/D/E and Circling Cats C/E visibility ¼ mile. For inoperative MALSR, increase S-17 Cat E visibility ¼ mile.</p>	<p>MALS A2</p>	<p>MISSED APPROACH: Climb to 1200 then climbing right turn to 3000 on MJF TACAN R-186 to CAJAN/MJF 15 DME and hold.</p>
--	--------------------	---

AWOS-3 133.425	FORT WORTH CENTER 132.025 360.75	MAJORS TOWER ★ 118.65 (CTAF) 0 385.425	GND CON 121.7 335.8	UNICOM 122.95
--------------------------	--	--	-------------------------------	-------------------------



One Minute Holding Pattern		WOLFI MJF 15	1200	3000	MJF R-186	CAJAN MJF 15
3000		347°	167°	167°	2200	289° TCH 74
9 NM		4.2 NM		1 NM		
CATEGORY	A	B	C	D	E	
S-17	1060-1	526 (600-1)	1060-1¼	526 (600-1¼)		
CIRCLING	1060-1¼	525 (600-1¼)	1060-1½	1100-2	1280-2¾	
			525 (600-1½)	565 (600-2)	745 (800-2¾)	



SC-2, 31 DEC 2020 to 28 JAN 2021

SC-2, 31 DEC 2020 to 28 JAN 2021