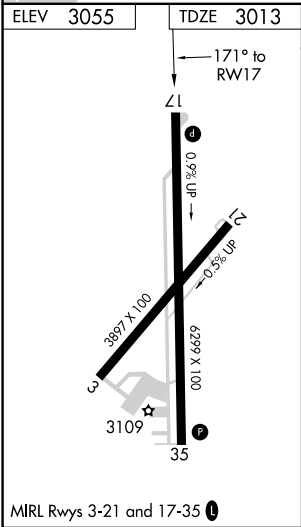
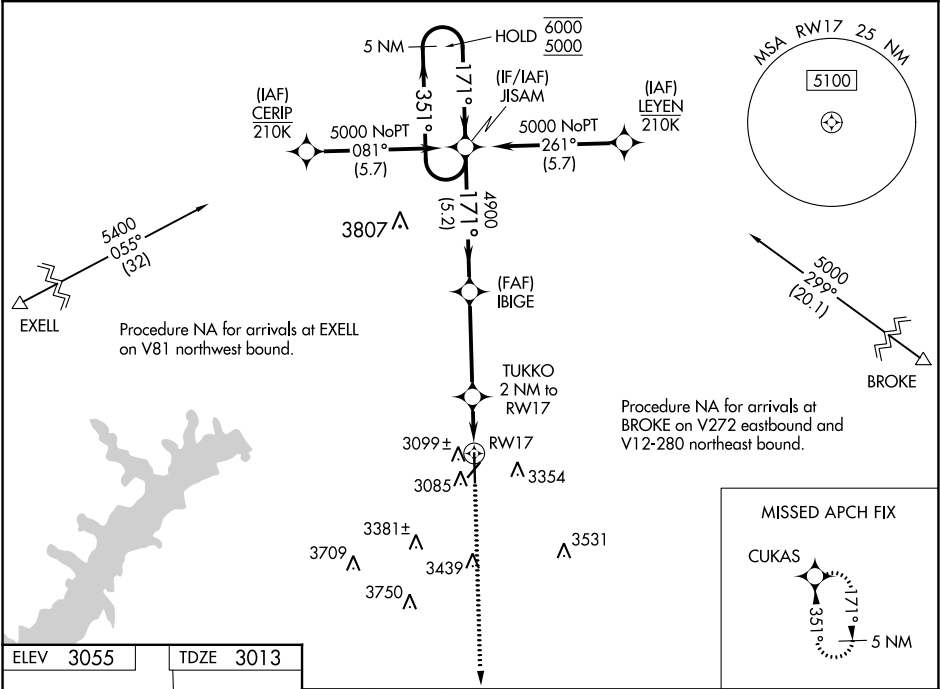



| | | |
|--|------------------------|---|
| WAAS CH 99442 W17A | APP CRS 171° | Rwy Idg 6299 TDZE 3013 Apt Elev 3055 |
|--|------------------------|---|

RNAV (GPS) RWY 17
HUTCHINSON COUNTY (BGD)

| | | |
|--|--|---|
| RNP APCH. ▼ ▲ For uncompensated Baro-VNAV systems, LNAV/VNAV NA below -14°C or above 51°C. | | MISSED APPROACH: Climb to 5100 direct CUKAS and hold. |
| ASOS 118.325 | AMARILLO APP CON ★ 119.5 307.0 | UNICOM 123.0 (CTAF) 0 |



| | | | | |
|-----------------------------|-----------------------|--|-----------------------|-------------------------|
| 5100 ↑ | | CUKAS  | | |
| * LNAV only. | | TUKKO 2 NM to RW17 | | |
| RW17 *1 NM to RW17 | | IBIGE 4900 | | |
| *3700 | | JISAM 5 NM Holding Pattern | | |
| GP 3.00° TCH 58 | | 351° → 6000 ← 171° 5000 | | |
| -1 NM -1 NM -3.8 NM -5.2 NM | | | | |
| CATEGORY | A | B | C | D |
| LPV DA | 3263-1 250 (300-1) | | | |
| LNAV/ VNAV DA | 3280-1 267 (300-1) | | | |
| LNAV MDA | 3360-1 347 (400-1) | | | |
| CIRCLING | 3620-1 565 (600-1) | 3660-1 605 (700-1) | 3760-2 705 (800-2) | 3760-2¼ 705 (800-2¼) |

SC-2, 31 DEC 2020 to 28 JAN 2021

SC-2, 31 DEC 2020 to 28 JAN 2021