

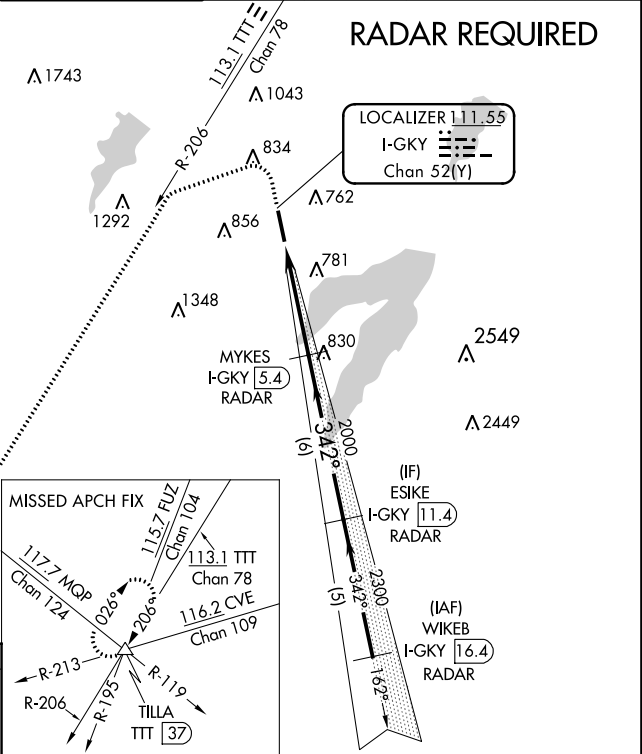
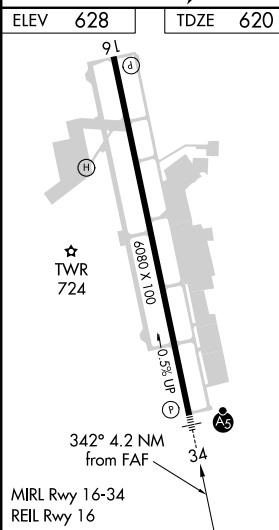
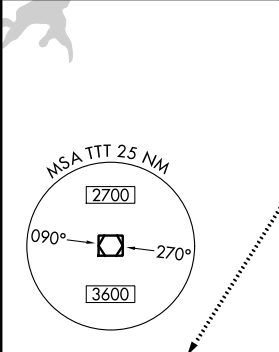
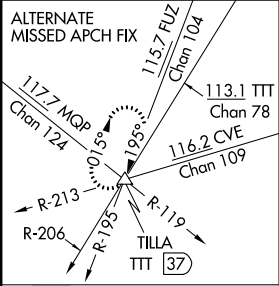
LOC/DME I-GKY 111.55 Chan 52 (Y)	APP CRS 342°	Rwy Idg TDZE Apt Elev 6080 620 628
---	------------------------	--

ILS or LOC/DME RWY 34
ARLINGTON MUNI (GKY)

When local altimeter setting not received, use Grand Prairie Muni altimeter setting. Inop table does not apply to S-ILS 34.
For inop MALSR increase S-LOC 34 Cat A, B visibility to 1 mile.

MALSR
MISSED APPROACH: Climb to 1100 then climbing left turn to 3000 via heading 245° and TTT VOR/DME R-206 to TILLA INT/TTT 37 DME and hold.

ASOS 127,375	REGIONAL APP CON 135,975 379.9	ARLINGTON TOWER ★ 128,625	GND CON 121,875	CLNC DEL 121,875	CLNC DEL 118.85 (When twr closed)	CTAF 128,625
------------------------	--	-------------------------------------	---------------------------	----------------------------	--	------------------------



1100	3000	TTT R-206	TILLA	VGSI and ILS glidepath not coincident (VGSI Angle 3.00/TCH 55).
↑	hdg 245°			MYKES I-GKY [5.4] RADAR
*LOC only.				ESIKE I-GKY [11.4] RADAR
*I-GKY				2000
I-GKY [1.1]				342°
1.3 NM				2.9 NM
6 NM				GS 3.00° TCH 60
CATEGORY	A	B	C	D
S-ILS 34	820-¾	200 (200-¾)		NA
S-LOC 34	1060-¾	440 (500-¾)		NA
CIRCLING	1100-1	472 (500-1)	1100-1½ 472 (500-1½)	NA

SC-2, 31 DEC 2020 to 28 JAN 2021

SC-2, 31 DEC 2020 to 28 JAN 2021