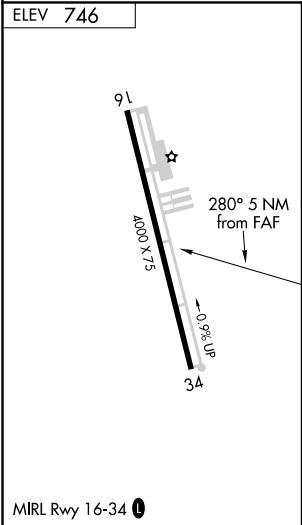
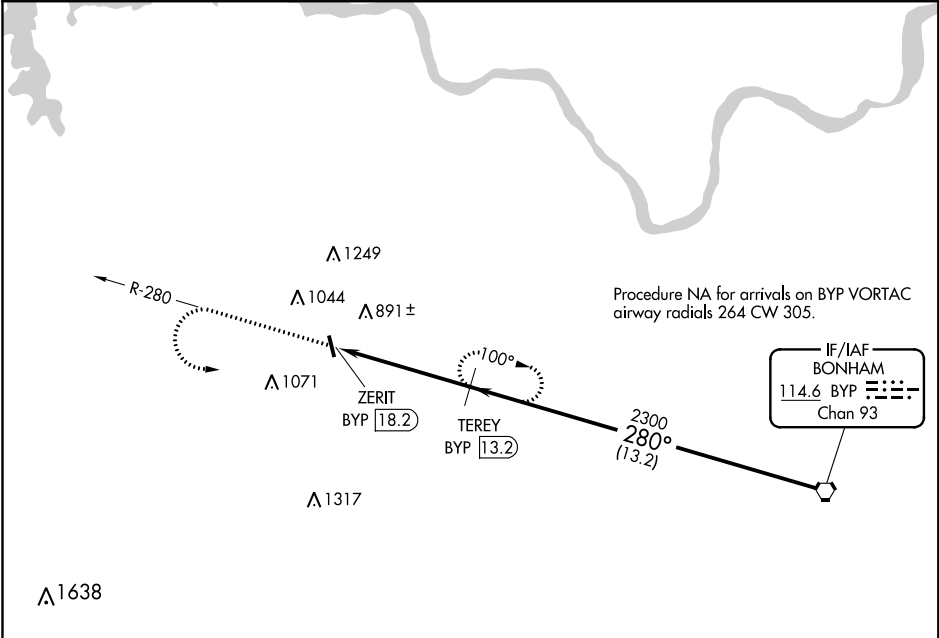


VORTAC BYP	APP CRS	Rwy Idg	N/A
114.6	280°	TDZE	N/A
Chan 93		Apt Elev	746

VOR/DME-A
SHERMAN MUNI (SWI)

<p>▼ Use Sherman/Denison altimeter setting, when not received, use Dallas-Love Field altimeter setting and increase all MDA 140 feet, increase visibility Cat B ¼ mile, Cat C ½ mile, and Cat D ¾ mile. Procedure NA at night. ▲ NA Helicopter visibility reduction below 1 SM NA.</p>	<p>MISSED APPROACH: Climb to 2300, then climbing left turn to 2400 on BYP R-280 to TEREY/13.2 DME and hold.</p>
--	---

FORT WORTH CENTER 124.75 323.0	UNICOM 122.8 (CTAF) 0
-----------------------------------	--------------------------



<div>2300 ↑</div>		<div>2400 BYP R-280</div>	<div>TEREY BYP 13.2</div>	<div>TEREY BYP 13.2</div>	<div>BYP VORTAC</div>
		<div>ZERIT BYP 18.2</div>	<div>✕</div>	<div>2300</div>	<div>2300</div>
		<div>5 NM</div>		<div>13.2 NM</div>	
CATEGORY	A		B	C	D
<div>CIRCLING</div>	1300-1 554 (600-1)		1420-1 674 (700-1)	1620-2½ 874 (900-2½)	1620-2¾ 874 (900-2¾)

