

NDB PYX 266	APP CRS 270°	Rwy Idg TDZE Apt Elev N/A N/A 2919	NDB-A PERRYTON OCHILTREE COUNTY (PYX)
-----------------------	------------------------	--	--

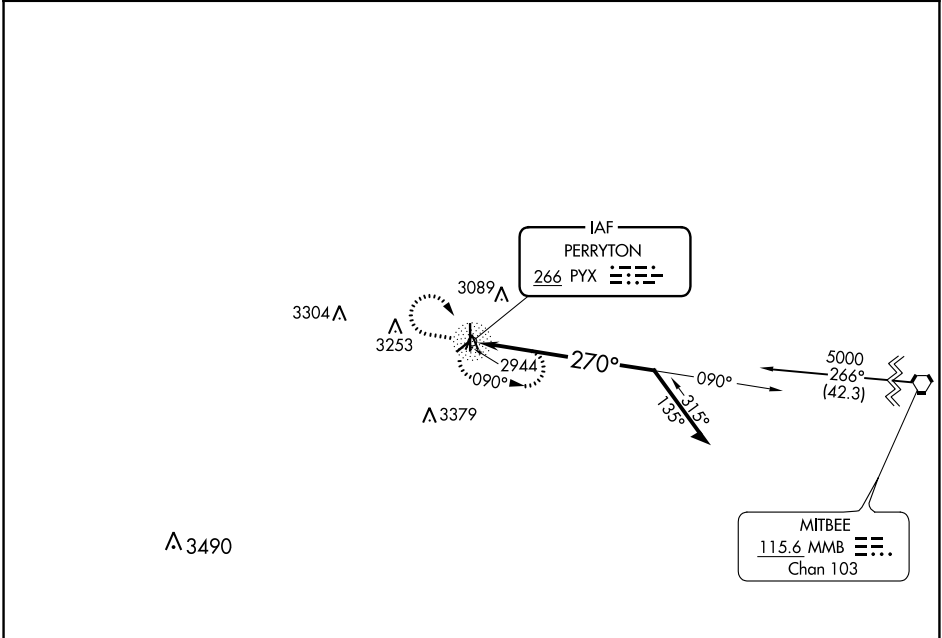
⚠

NA

When local altimeter setting not received, use Gage altimeter setting and increase all MDA 220 feet and Cat B visibility ¼ mile. Circling NA to Rwy 4 and 22.

MISSED APPROACH: Climb to 4000 then climbing right turn to 5000 direct PYX NDB and hold.

AWOS-3 118.175	KANSAS CITY CENTER 126.95 379.2	UNICOM 122.8 (CTAF) 0
--------------------------	---	---------------------------------



4000

5000

PYX

PYX NDB

Remain within 10 NM

090°

270°

4900

ELEV 2919

3280 X 144

5701 X 75

35

270° to NDB

CATEGORY	A	B	C	D
CIRCLING	3460-1 542 (600-1)	3580-1 662 (700-1)	NA	

MIRL Rwy 17-35 0