

WAAS CH 65731 W17A	APP CRS 174°	Rwy Idg 5862 TDZE 3244 Apt Elev 3245
----------------------------------------	------------------------	-----------------------------------------------------------------

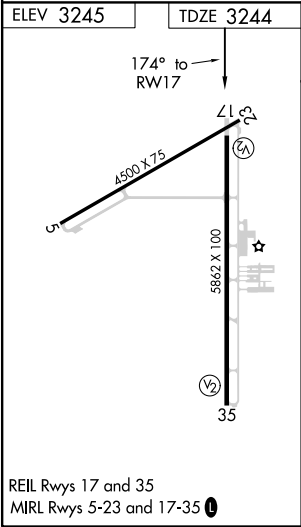
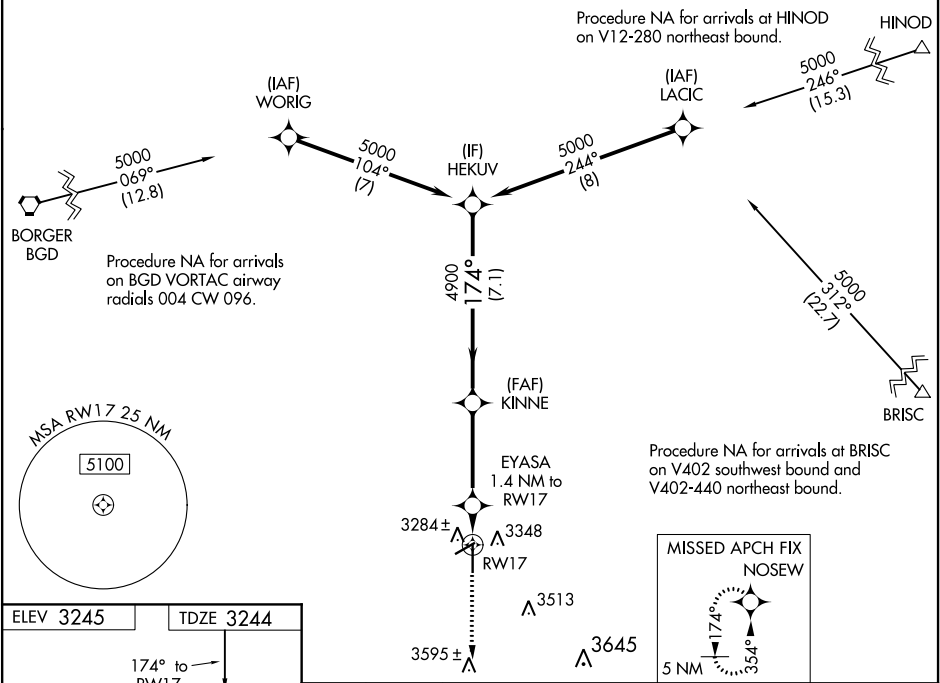
RNAV (GPS) RWY 17

PERRY LEFORS FIELD (PPA)

⚠ Baro-VNAV NA when using Borger altimeter setting. For uncompensated Baro-VNAV systems, LNAV/VNAV NA below -21°C (-5°F) or above 54°C (130°F). DME/DME RNP-0.3 NA. When local altimeter setting not received, use Borger altimeter setting and increase all DA 73 feet and all MDA 80 feet. Increase LPV and LNAV/VNAV all Cats and LNAV Cat C/D visibility ½ mile. Procedure NA at night. Helicopter visibility reduction below 1 SM NA.

MISSED APPROACH: Climb to 6000 direct NOSEW and hold, continue climb-in-hold to 6000.

AWOS-3 118.725	ALBUQUERQUE CENTER 127.85 285.475	UNICOM 122.7 (CTAF) 0
--------------------------	---------------------------------------------	---------------------------------



6000 ↑	NOSEW ✦				
*LNAV only.		EYASA 1.4 NM to RW17	KINNE 4900	HEKUV 5000	GP 3.00° TCH 45
RW17		1.4 NM	3.7 NM	7.1 NM	
CATEGORY	A	B	C	D	
LPV DA	3494-1 250 (300-1)				
LNAV/ VNAV DA	3494-1 250 (300-1)				
LNAV MDA	3540-1 296 (300-1)				
CIRCLING	3700-1 455 (500-1)		3700-1½ 455 (500-1½)	3800-2 555 (600-2)	