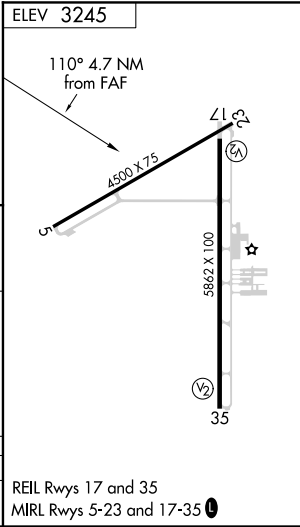
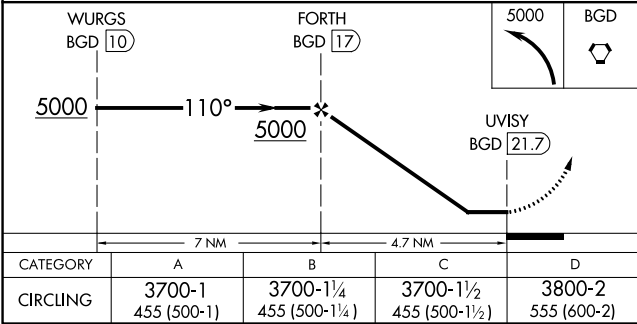
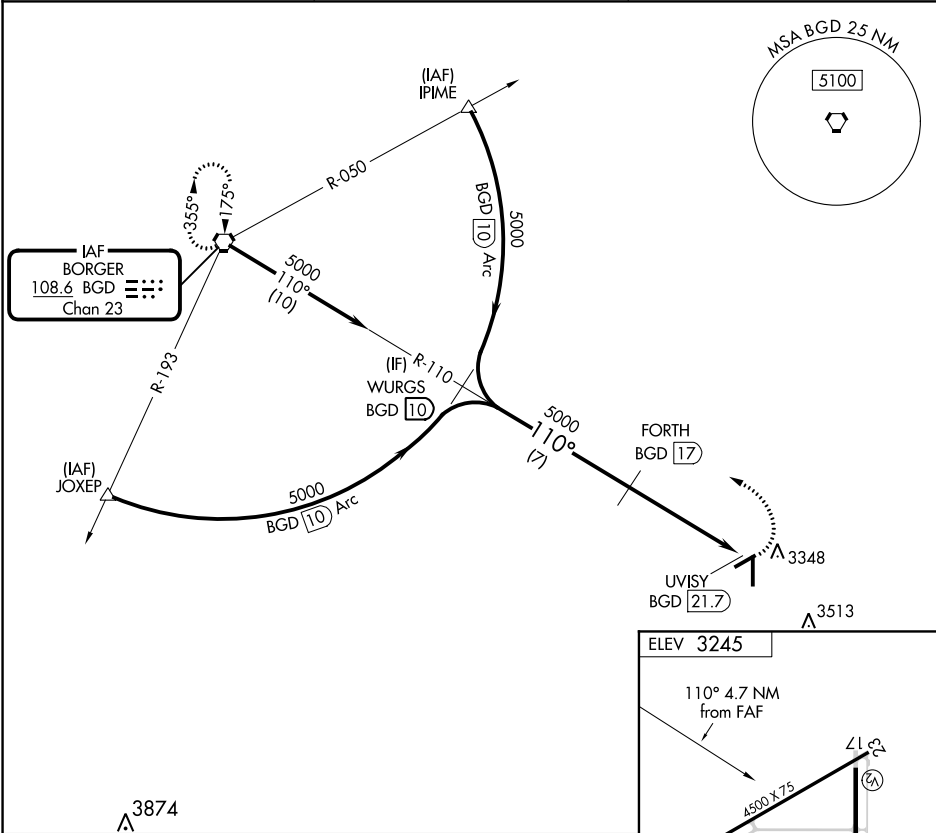


VORTAC BGD <b>108.6</b> Chan <b>23</b>	APP CRS <b>110°</b>	Rwy Idg TDZE Apt Elev <b>N/A</b> <b>N/A</b> <b>3245</b>
--	------------------------	--

VOR/DME-A  
PERRY LEFORS FIELD (PPA)

<p><b>⚠</b> When local altimeter setting not received, use Borger altimeter setting and increase all MDA 80 feet. Procedure NA at night. Helicopter visibility reduction below 1 SM NA.</p>	<p>MISSED APPROACH: Climbing left turn to 5000 direct BGD VORTAC and hold.</p>
---	--

AWOS-3 <b>118.725</b>	ALBUQUERQUE CENTER <b>127.85 285.475</b>	UNICOM <b>122.7 (CTAF) 0</b>
--------------------------	---	---------------------------------



SC-2, 31 DEC 2020 to 28 JAN 2021

SC-2, 31 DEC 2020 to 28 JAN 2021