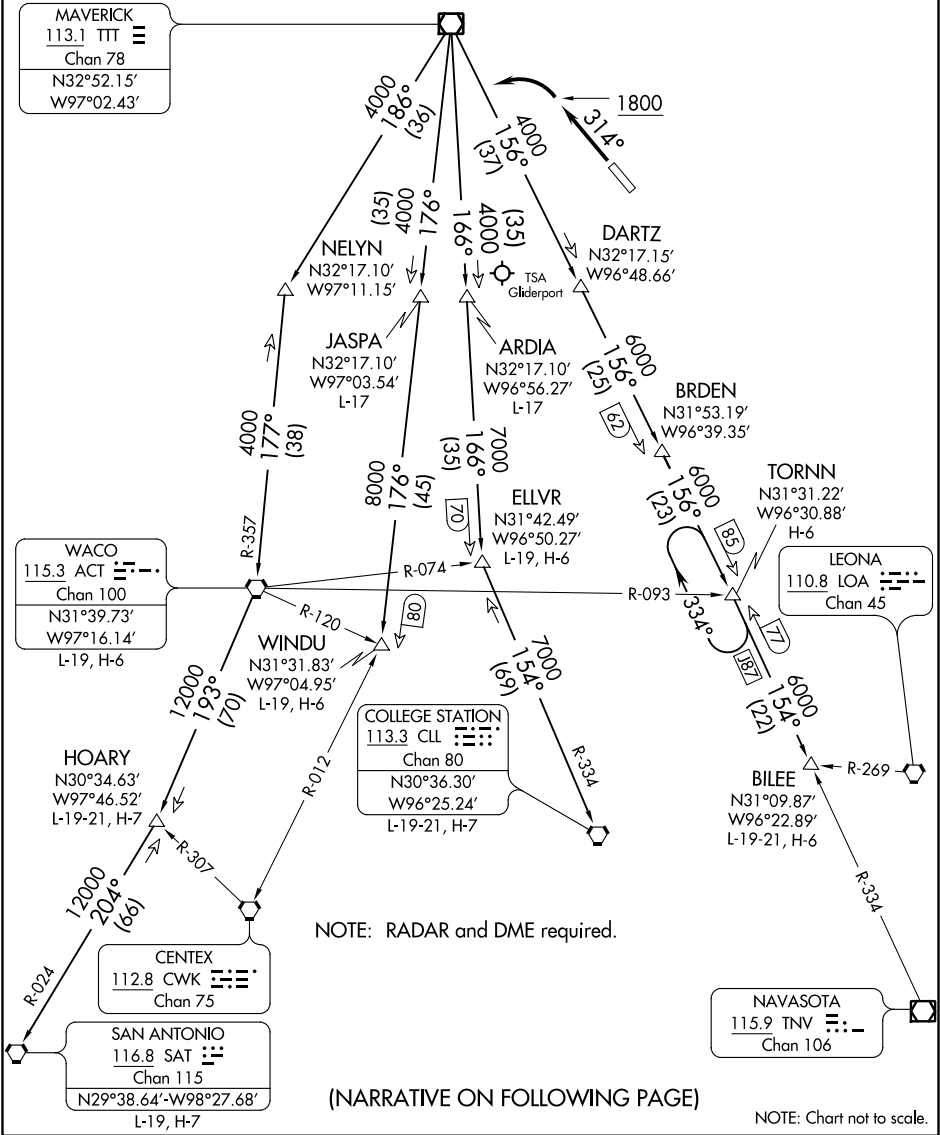


JOE POOL TWO DEPARTURE

TAKEOFF MINIMUMS

Rwy 13: Standard.
Rwy 31: 300-1¼ or standard with minimum climb of 205' per NM to 800,
or alternatively, with standard takeoff minimums and a normal 200' per NM
climb gradient, takeoff must occur no later than 1200' prior to DER.

CTAF
122.7
REGIONAL DEP CON
125.2 343.65



SC-2, 31 DEC 2020 to 28 JAN 2021

SC-2, 31 DEC 2020 to 28 JAN 2021