

NDBCGQ

344

APPCRCS

139°

RwyIdg

5004

TDZE

449

AptElev

449

NDBRWY 14

C DAVID CAMPBELL FIELD-CORSICANA MUNI (CRS)

Procedure NA at night. Rwy 14 helicopter visibility reduction below 1 SM NA. Circling NA to Rws 2 and 20.

MISSED APPROACH: Climb to 1500 then climbing right turn to 2500 direct CGQ NDB and hold.

ASOS

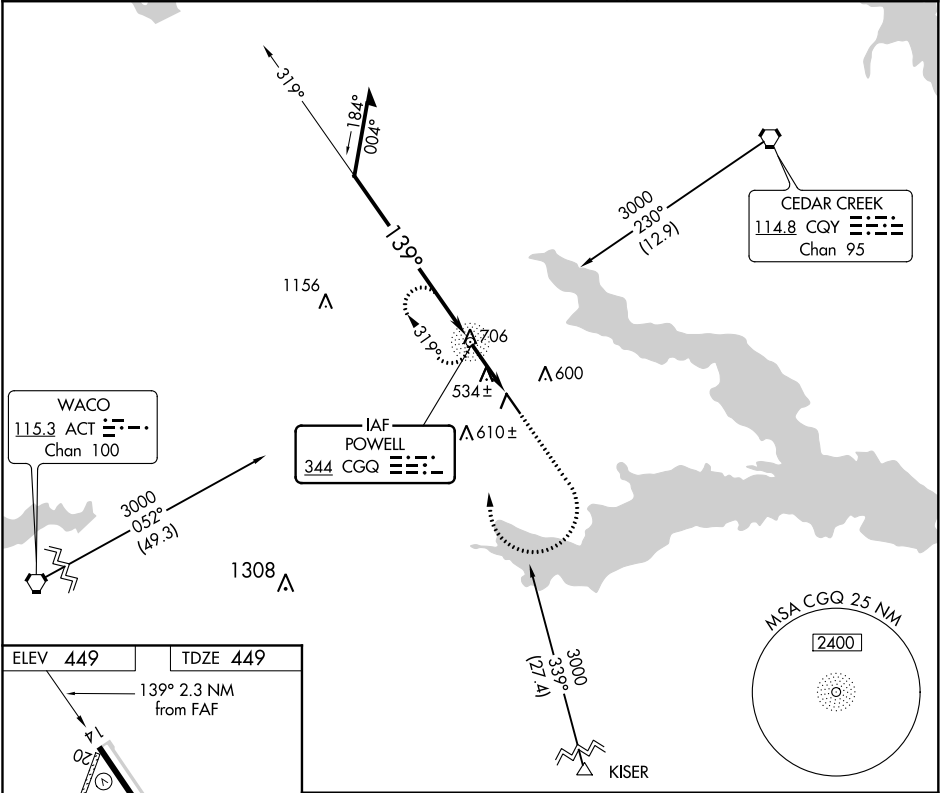
120.675

FORT WORTH CENTER

135.25 265.1

UNICOM

122.8 (CTAF) 0



ELEV 449

TDZE 449

139° 2.3 NM from FAF

3200 X 75

5004 X 75

0.3% UP

0.3% UP

MIRLRwy 14-32

REILRws 14 and 32

|         | 60   | 90   | 120  | 150  | 180  |
|---------|------|------|------|------|------|
| Knots   | 60   | 90   | 120  | 150  | 180  |
| Min:Sec | 2:18 | 1:32 | 1:09 | 0:55 | 0:46 |

Remain within 10 NM

CGQ NDB

2500

319°

139°

1300

3.38°

TCH 40

2.3 NM

VGSI and descent angle not coincidental [VGSI Angle 3.00/TCH 26].

1500

2500

CGQ

| CATEGORY | A           | B           | C            | D            |
|----------|-------------|-------------|--------------|--------------|
| S-14     | 860-1       | 411 (500-1) | 860-1¼       | 411 (500-1¼) |
| CIRCLING | 860-1       | 960-1       | 1060-1¼      | 1080-2       |
|          | 411 (500-1) | 511 (600-1) | 611 (700-1¼) | 631 (700-2)  |