

WAAS CH 70331 W35A	APP CRS 352°	Rwy Idg TDZE 2426 Apt Elev 2430
--	------------------------	---

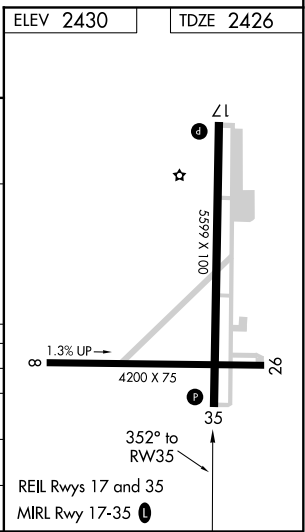
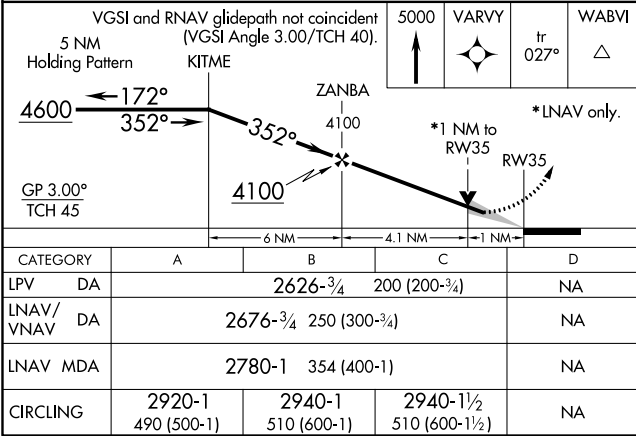
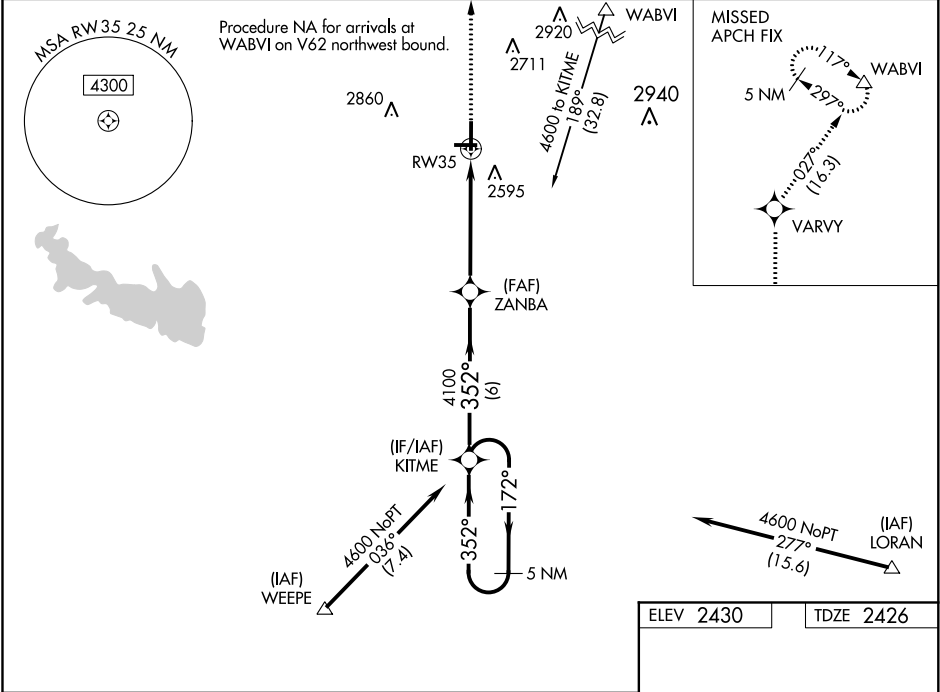
RNAV (GPS) RWY 35
WINSTON FIELD (SNK)

▼ Baro-VNAV NA when using Sweetwater altimeter setting. For uncompensated Baro-VNAV systems, LNAV/VNAV NA below -19°C (-2°F) or above 54°C (130°F). DME/DME RNP-0.3 NA.

▲ VDP NA with Sweetwater altimeter setting. When local altimeter setting not received, use Sweetwater altimeter setting and increase all DA 72 feet and all MDA 80 feet; increase LPV all Cats visibility 1/8 mile, LNAV/VNAV all Cats visibility 3/8 mile, and LNAV Cat C visibility 1/4 mile. Night landing: Rwy 8, 26, 17 NA.

MISSED APPROACH:
Climb to 5000 direct VARVY and on track 027° to WABVI and hold, continue climb-in-hold to 6000.

AWOS-3 119.925	FORT WORTH CENTER 127.45 290.3	UNICOM 122.8 (CTAF) 0
--------------------------	--	---------------------------------



SC-2, 31 DEC 2020 to 28 JAN 2021

SC-2, 31 DEC 2020 to 28 JAN 2021