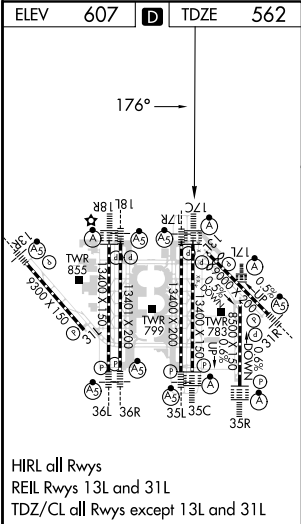
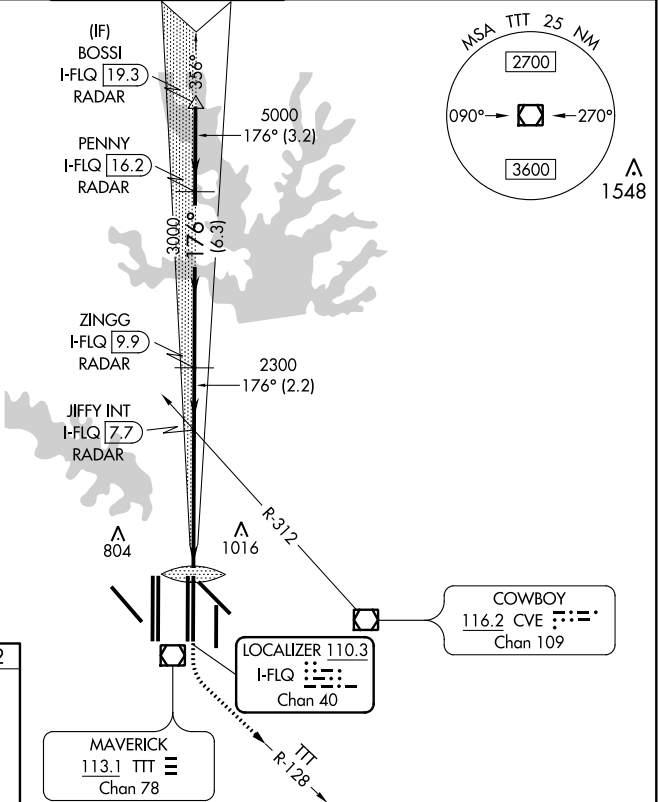
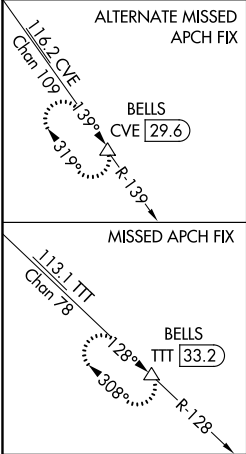


LOC/DME I-FLQ	APP CRS	Rwy Idg	13400
110.3	176°	TDZE	562
Chan 40		Apt Elev	607

# CONVERGING ILS RWY 17C

DALLAS-FORT WORTH INTL (DFW)

DME or RADAR required. Simultaneous approach authorized with Converging ILS Rwy 13R.		ALSF-2		MISSED APPROACH: Climb to 1300 then climbing left turn to 3000 on TTT VOR/DME R-128 to BELLS/TTT 33.2 DME and hold.	
D-ATIS	REGIONAL APP CON	DFW TOWER	GND CON	CLNC DEL	CPDLC
ARR 123.775 DEP 135.925	127.075	126.55 127.5 EAST 124.15 134.9 WEST	121.65 121.8 EAST 121.85 WEST	128.25	



1300	3000	BELLS	VGS1 and ILS glidepath not coincident (VGS1 Angle 3.00/TCH 74).	
↑	TTT R-128	△	JIFFY INT I-FLQ 7.7 RADAR	ZINGG I-FLQ 9.9 RADAR
			PENNY I-FLQ 16.2 RADAR	BOSSI I-FLQ 19.3 RADAR
CATEGORY	A	B	C	D
S-ILS 17C	762/18 200 (200-1/2)			

SC-2, 31 DEC 2020 to 28 JAN 2021

SC-2, 31 DEC 2020 to 28 JAN 2021