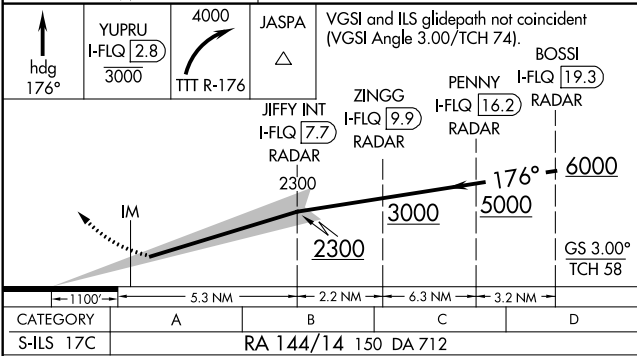
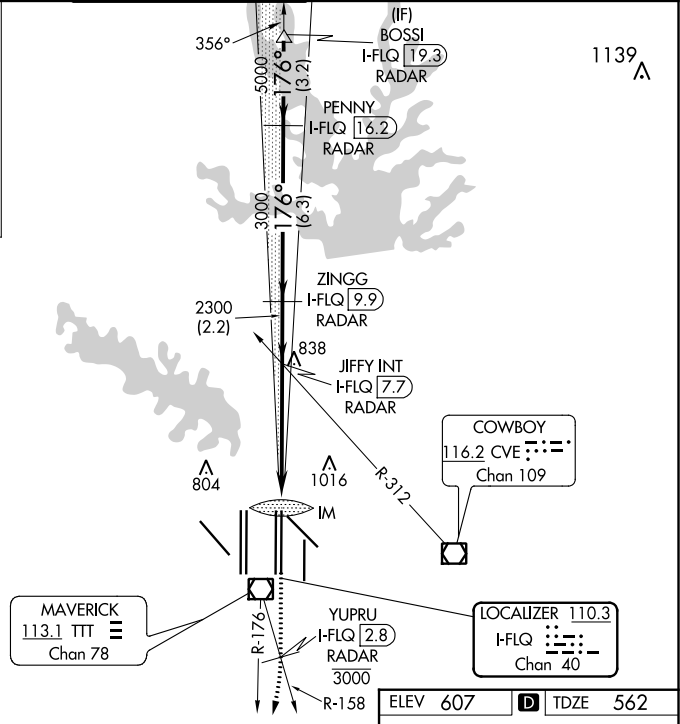
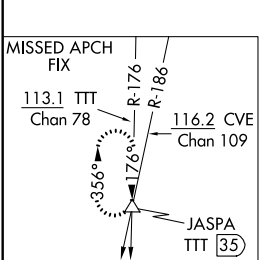
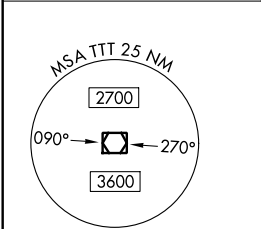
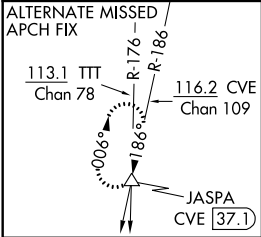


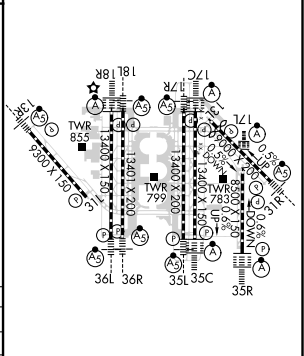
LOC/DME I-FLQ 110.3 Chan 40	APP CRS 176°	Rwy ldg 13400 TDZE 562 Apt Elev 607
---	------------------------	--

ILS RWY 17C (SA CAT I)
DALLAS-FORT WORTH INTL (DFW)

DME and RADAR required.		ALSF-2 	MISSED APPROACH: Climb on heading 176° to cross YUPRU/2.8 DME/RADAR at or below 3000, then climbing right turn to 4000 on TTT VOR/DME R-176 to JASPA/TTT 35 DME and hold.	
Simultaneous approach authorized with Rwy 17L, 18L/R. Requires specific OPSPEC, MSPEC, or LOA approval and use of HUD to DA.				
D-ATIS ARR 123.775 DEP 135.925	REGIONAL APP CON 127.075	DFW TOWER 126.55 127.5 EAST 124.15 134.9 WEST	GND CON 121.65 121.8 EAST 121.85 WEST	CINC DEL 128.25 CPDLC



ELEV 607	TDZE 562
----------	----------



SA CATEGORY I ILS - SPECIAL AIRCREW & AIRCRAFT CERTIFICATION REQUIRED

HIRL all Rwy's
REIL Rwy's 13L and 31L
TDZ/CL all Rwy's except 13L and 31L

SC-2, 31 DEC 2020 to 28 JAN 2021

SC-2, 31 DEC 2020 to 28 JAN 2021