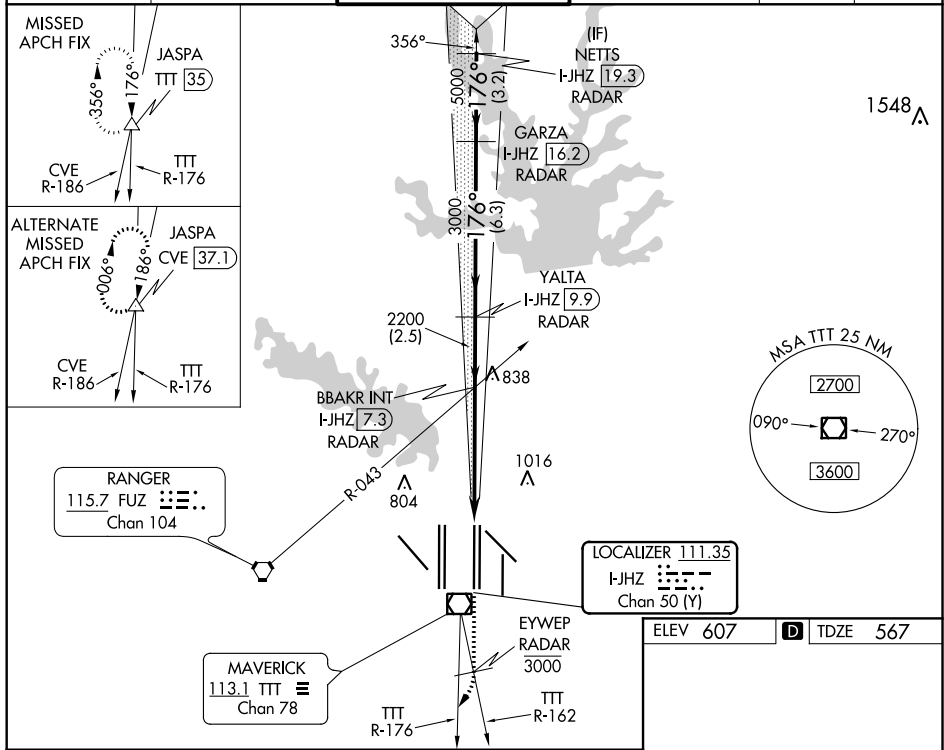


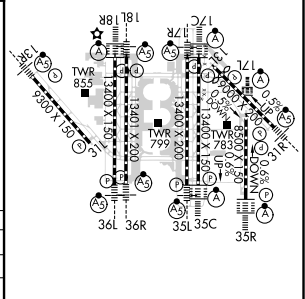
LOC/DME I-JHZ 111.35 Chan 50 (Y)	APP CRS 176°	Rwy Idg TDZE Apt Elev	13400 567 607
--	------------------------	-----------------------------	--

ILS RWY 17R (SA CAT I & CAT II)
DALLAS-FORT WORTH INTL (DFW)

DME and RADAR required.			<div>MALSR</div> <div><div><div>A</div><div><div></div><div></div><div></div><div></div><div></div><div></div></div></div></div>	MISSED APPROACH: Climb on heading 176° to cross EYWEY/RADAR at or below 3000, then climbing right turn to 4000 on TTT VOR/DME R-176 to JASPA/TTT 35 DME and hold.		
<div>V</div>	SA Cat I: Requires specific OPSPEC, MSPEC, or LOA approval and use of HUD to DH. SA Cat II: Reduced lighting; Requires specific OPSPEC, MSPEC, or LOA approval and use of Autoland to touchdown. Simultaneous approach authorized with Rwy 17L, 18L/R.					
	<div>D-ATIS</div> <div>ARR 123.775</div> <div>DEF 135.925</div>	<div>REGIONAL APP CON</div> <div>127.075</div>	<div>DFW TOWER</div> <div>126.55 127.5 EAST</div> <div>124.15 134.9 WEST</div>	<div>GND CON</div> <div>121.65 121.8 EAST</div> <div>121.85 WEST</div>	<div>CLNC DEL</div> <div>128.25</div>	<div>CPDLC</div>



↑ hdg 176°	EYWEP RADAR 3000	4000 TTT R-176	JASPA △	BBAKR INT I-JHZ [7.3] RADAR	YALTA I-JHZ [9.9] RADAR	GARZA I-JHZ [16.2] RADAR	NETTS I-JHZ [19.3] RADAR
				<p>2200</p> <p>3000</p> <p>5000</p> <p>176°</p> <p>6000</p> <p>GS 3.00° TCH 54</p> <p>VGS1 and ILS glidepath not coincident (VGS1 Angle 3.00/TCH 68)</p>			
<p>1088°</p> <p>5 NM</p> <p>2.5 NM</p> <p>6.3 NM</p> <p>3.2 NM</p>							
CATEGORY	A		B		C		D
S-ILS 17R	SA CAT I		RA 160/14		150 DA 717		
S-ILS 17R	SA CAT II		RA 98/12		100 DA 667		



SA CATEGORY I & II ILS SPECIAL AIRCREW
& AIRCRAFT CERTIFICATION REQUIRED

HIRL all Rwys
REIL Rwys 13L and 31L
TDZ/CL all Rwys except 13L and 31L