
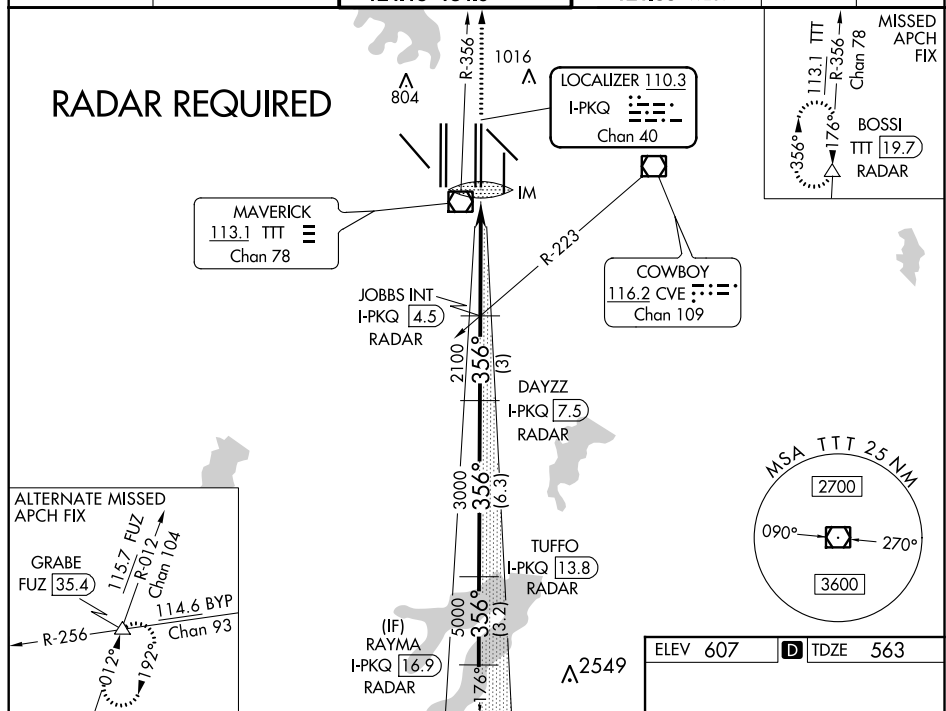


LOC/DME I-PKQ 110.3 Chan 40	APP CRS 356°	Rwy Idg TDZE Apt Elev	13400 563 607
---	------------------------	-----------------------------	--

ILS RWY 35C (CAT II & III)
DALLAS-FORT WORTH INTL (DFW)

DME or RADAR required. Simultaneous approach authorized with Rwy 35R, Rwy 36L/R.			ALSF-2 	MISSED APPROACH: Climb to 3000 on TTT VOR/DME R-356 to BOSSI/TTT 19.7 DME/RADAR and hold.	
D-ATIS ARR 123.775 DEP 135.925	REGIONAL APP CON 127.075	DFW TOWER 126.55 127.5 EAST 124.15 134.9 WEST	GND CON 121.65 121.8 EAST 121.85 WEST	CLNC DEL 128.25	CPDLC



3000
↑
TTT R-356

BOSSI
△

VGS and ILS glidepath not coincident
(VGS Angle 3.00/TCH 76).

RAYMA
I-PKQ 16.9

TUFFO
RADAR

I-PKQ 13.8

DAYZZ
I-PKQ 7.5
RADAR

JOBBS INT
I-PKQ 4.5
RADAR

IM
663

2100

3000

5000

6000

356°

GS 3.00°
TCH 59

1050

4.6 NM

3 NM

6.3 NM

3.2 NM

CATEGORY	A	B	C	D
S-ILS 35C	CAT II RA 100/12 100 DA 663			
S-ILS 35C	CAT IIIa RVR 07			
S-ILS 35C	CAT IIIb RVR 06			
S-ILS 35C	CAT IIIc NA			

CATEGORY II & III ILS - SPECIAL AIRCREW
& AIRCRAFT CERTIFICATION REQUIRED

HIRL all Rws
REIL Rws 13L and 31L
TDZ/CL all Rws except 13L and 31L