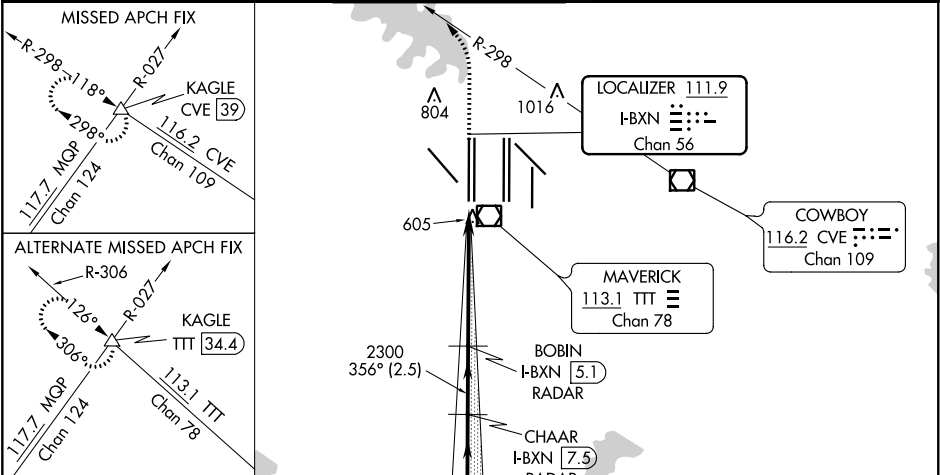


LOC/DME I-BXN <b>111.9</b> Chan <b>56</b>	APP CRS <b>356°</b>	Rwy Idg TDZE <b>588</b> Apt Elev <b>607</b>	<b>13400</b>
---	------------------------	---	--------------

ILS RWY 36L (SA CAT II)  
DALLAS-FORT WORTH INTL (DFW)

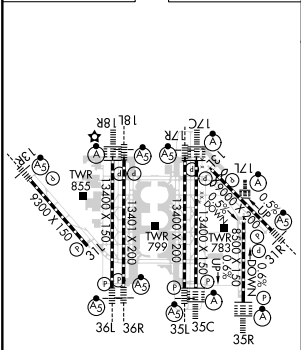
<b>▼</b> DME or RADAR required. Reduced Lighting: Requires specific OPSPEC, MSPEC, or LOA approval and use of autoland or HUD to touchdown.	MALSR 	MISSED APPROACH: Climb to 1100 then climbing left turn to 3000 on heading 315° and CVE VOR/DME R-298 to KAGLE INT/ CVE VOR/DME 39 DME and hold.
--	-----------	---

D-ATIS ARR <b>123.775</b> DEP <b>135.925</b>	REGIONAL APP CON <b>118.425</b>	DFW TOWER <b>126.55 127.5 EAST</b> <b>124.15 134.9 WEST</b>	GND CON <b>121.65 121.8 EAST</b> <b>121.85 WEST</b>	CLNC DEL <b>128.25</b>	CPDLC
--	------------------------------------	---	---	---------------------------	-------

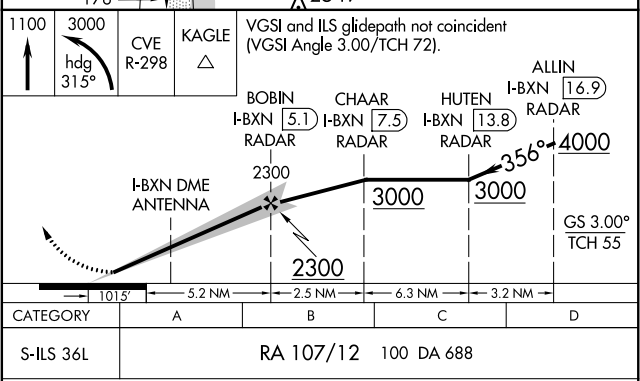


RADAR REQUIRED

ELEV <b>607</b>	<b>D</b>	TDZE <b>588</b>
-----------------	----------	-----------------



HIRL all Rwys  
REIL Rwys 13L and 31L  
TDZ/CL all Rwys except 13L and 31L



SA CATEGORY II - ILS SPECIAL AIRCREW  
& AIRCRAFT CERTIFICATION REQUIRED