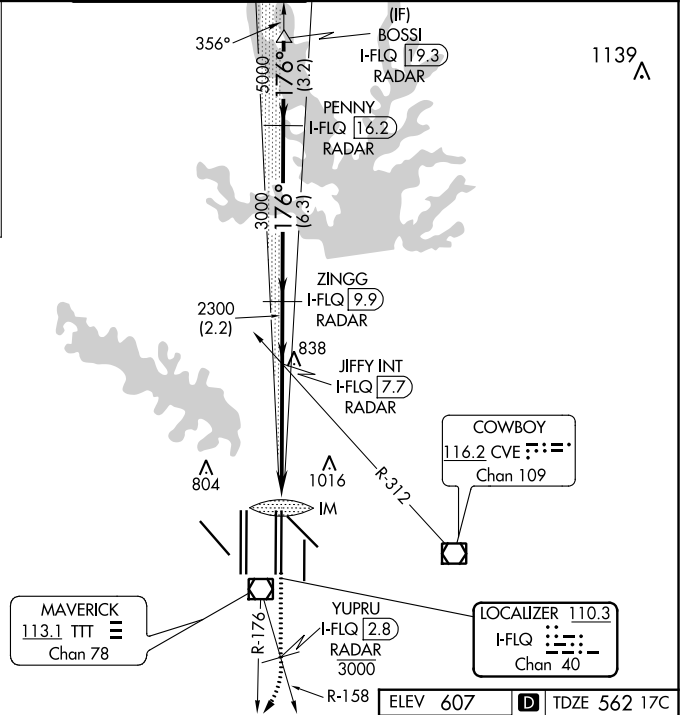
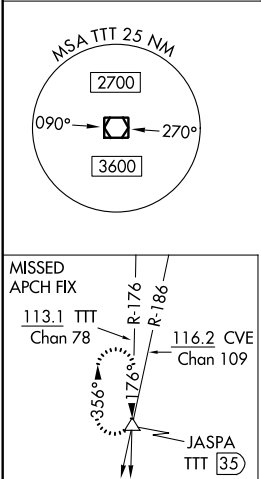
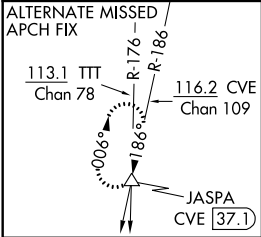



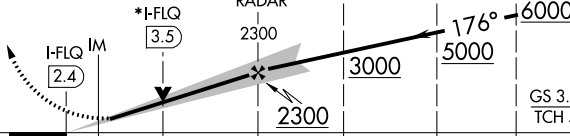


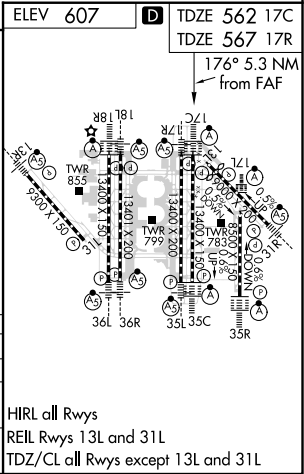
LOC/DME I-FLQ <b>110.3</b> Chan <b>40</b>	APP CRS <b>176°</b>	Rwy 17C Idg <b>13400</b> TDZE <b>562</b> Apt Elev <b>607</b>	Rwy 17R Idg <b>13400</b> TDZE <b>567</b> Apt Elev <b>607</b>
---	------------------------	--	--

ILS or LOC RWY 17C  
DALLAS-FORT WORTH INTL (DFW)

DME and RADAR required. Simultaneous approach authorized with Rwy 17L, 18L/R. Inop table does not apply to sidestep 17R Cats A and B.		Rwy 17C ALSF-2 	Rwy 17R MALSR 	MISSED APPROACH: Climb on heading 176° to cross YUPRU/2.8 DME/RADAR at or below 3000, then climbing right turn to 4000 on TTT VOR/DME R-176 to JASPA/TTT 35 DME and hold.	
D-ATIS ARR <b>123.775</b> DEP <b>135.925</b>	REGIONAL APP CON <b>127.075</b>	DFW TOWER <b>126.55 127.5 EAST</b> <b>124.15 134.9 WEST</b>		GND CON <b>121.65 121.8 EAST</b> <b>121.85 WEST</b>	CLNC DEL <b>128.25</b>
				CPDLC	



 hdg 176°	YUPRU I-FLQ <u>2.8</u> 3000	4000  TTT R-176	JASPA 	VGSI and ILS glidepath not coincident (VGSI Angle 3.00/TCH 74).	
*LOC only.				BOSSI I-FLQ <u>19.3</u>	
				ZINGG I-FLQ <u>9.9</u> RADAR	PENNY I-FLQ <u>16.2</u> RADAR
				JEFFY INT I-FLQ <u>7.7</u> RADAR	RADAR
				RADAR	
				RADAR	
				RADAR	
				RADAR	
				RADAR	
				RADAR	
				RADAR	
				RADAR	
				RADAR	
				RADAR	
				RADAR	
				RADAR	
				RADAR	
				RADAR	
				RADAR	
				RADAR	
				RADAR	
				RADAR	
				RADAR	
				RADAR	
				RADAR	
				RADAR	
				RADAR	
				RADAR	
				RADAR	
				RADAR	
				RADAR	
				RADAR	
				RADAR	
				RADAR	
				RADAR	
				RADAR	
				RADAR	
				RADAR	
				RADAR	
				RADAR	
				RADAR	
				RADAR	
				RADAR	
				RADAR	
				RADAR	
				RADAR	
				RADAR	
				RADAR	
				RADAR	
				RADAR	
				RADAR	
				RADAR	
				RADAR	
				RADAR	
				RADAR	
				RADAR	
				RADAR	
				RADAR	
				RADAR	
				RADAR	
				RADAR	
				RADAR	
				RADAR	
				RADAR	
				RADAR	
				RADAR	
				RADAR	
				RADAR	
				RADAR	
				RADAR	
				RADAR	
				RADAR	
				RADAR	
				RADAR	
				RADAR	
				RADAR	
				RADAR	
				RADAR	
				RADAR	
				RADAR	
				RADAR	
				RADAR	
				RADAR	
				RADAR	
				RADAR	
				RADAR	
				RADAR	
				RADAR	
				RADAR	
				RADAR	
				RADAR	
				RADAR	
				RADAR	
				RADAR	
				RADAR	
				RADAR	
				RADAR	
				RADAR	
				RADAR	
				RADAR	
				RADAR	
				RADAR	
				RADAR	
				RADAR	
				RADAR	
				RADAR	
				RADAR	
				RADAR	
				RADAR	
				RADAR	
				RADAR	
				RADAR	
				RADAR	
				RADAR	
				RADAR	
				RADAR	
				RADAR	
				RADAR	
				RADAR	
				RADAR	
				RADAR	
				RADAR	
				RADAR	
				RADAR	
				RADAR	
				RADAR	
				RADAR	
				RADAR	
				RADAR	
				RADAR	
				RADAR	
				RADAR	
				RADAR	
				RADAR	
				RADAR	
				RADAR	
				RADAR	
				RADAR	
				RADAR	
				RADAR	
				RADAR	
				RADAR	
				RADAR	
				RADAR	
				RADAR	
				RADAR	
				RADAR	
				RADAR	
				RADAR	
				RADAR	
				RADAR	
				RADAR	
				RADAR	
				RADAR	
				RADAR	
				RADAR	
				RADAR	
				RADAR	
				RADAR	
				RADAR	
				RADAR	
				RADAR	
				RADAR	
				RADAR	
				RADAR	
				RADAR	
				RADAR	
				RADAR	
				RADAR	
				RADAR	
				RADAR	
				RADAR	
				RADAR	
				RADAR	
				RADAR	
				RADAR	
				RADAR	
				RADAR	
				RADAR	
				RADAR	
				RADAR	
				RADAR	
				RADAR	
				RADAR	
				RADAR	
				RADAR	
				RADAR	
				RADAR	
				RADAR	
				RADAR	
				RADAR	
				RADAR	
				RADAR	
				RADAR	
				RADAR	
				RADAR	
				RADAR	
				RADAR	
				RADAR	
				RADAR	
				RADAR	
				RADAR	
				RADAR	
				RADAR	
				RADAR	
				RADAR	
				RADAR	
				RADAR	
				RADAR	



SC-2, 31 DEC 2020 to 28 JAN 2021

SC-2, 31 DEC 2020 to 28 JAN 2021