

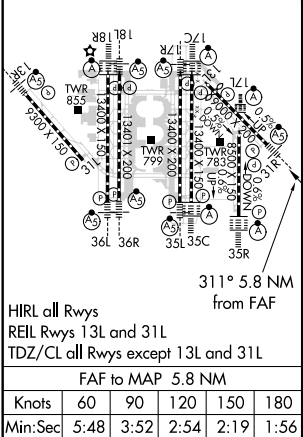
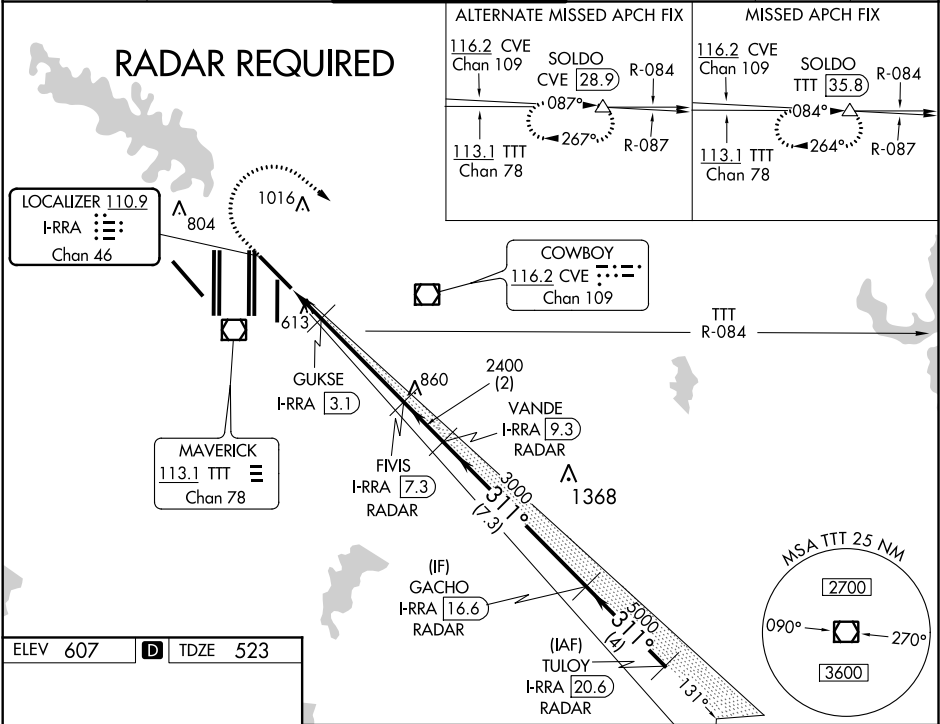


LOC/DME I-RRR 110.9 Chan 46	APP CRS 311°	Rwy Idg 8373 TDZE 523 Apt Elev 607
---	------------------------	---

ILS or LOC RWY 31R
DALLAS-FORT WORTH INTL (DFW)

	Simultaneous approach authorized. DME required. For inop ALS increase S-LOC 31R GUKSE FIX minimums Cat C/D visibility to RVR 5500.		MALSR 	MISSED APPROACH: Climb to 1100 then climbing right turn to 3000 on heading 125° and TTT VOR/ DME R-084 to SOLD0/TTT 35.8 DME and hold.		
	D-ATIS ARR 123.775 DEP 135.925	REGIONAL APP CON 135.5 125.2	DFW TOWER 126.55 127.5 EAST 124.15 134.9 WEST		GND CON 121.65 121.8 EAST 121.85 WEST	CLNC DEL 128.25



ELEV 607	D	TDZE 523
1100 3000 TTT R-084 SOLD0		
*LOC only.		
*I-RRR 1.6 I-RRR 2.5 I-RRR 3.1 I-RRR 7.3 I-RRR 9.3 I-RRR 16.6 I-RRR 20.6		
*1060 2400 311° 5000 GS 3.00° TCH 53		
VGSi and ILS glidepath not coincident (VGSi Angle 3.00/TCH 69°).		
CATEGORY	A	B C D
S-ILS 31R	723/18	200 (200-½)
S-LOC 31R	1060/24 537 (500-½)	1060/55 537 (500-1¼)
GUKSE FIX MINIMUMS		
S-LOC 31R	880/24 357 (300-½)	880/30 357 (300-¾)

SC-2, 31 DEC 2020 to 28 JAN 2021

SC-2, 31 DEC 2020 to 28 JAN 2021